



Quick Start Guide

Sága Edition Gaming Headset

GHG700

PART NO. Q1342

Package Contents

1

1 x GHG700
1 x Micro USB Charging Cable
1 x Carry Bag

1 x Quick Start Guide
1 x Warranty Card

System Requirements

- Devices with 3.5mm stereo jacks
- PS4, Xbox One™ (requires Xbox One Stereo Headset Adapter- not included)

Warnings

Please read the following information before using the headset. Additional warnings may be present on the product or packaging.

- Continuous exposure to high volume level and noise can potentially cause hearing damage
- Before using your headset, it is recommended that you adjust headset volume to the lowest, then increase the volume gradually to a moderate and comfortable level
- High levels of volume may result in hearing loss, avoid using the headset at high volume continuously
- If you experience ringing or muffled speech in your ear, then stop using the headset and consult your doctor immediately
- Your ears will adapt to loud volume levels over time and this will damage your hearing even if you don't feel any discomfort
- Maintaining the volume at an adequate level is important while using the headset

Dolby Pro Logic IIx Virtual Surround

The GHG700 Saga Edition Gaming Headset features a built-in Dolby Pro Logic IIx Virtual Surround processor to take your music, movie or gaming experience to the next level! If you have ever listened to a multichannel home theater system you know how much greater the experience becomes when you unleash the depth of a surround system. The GHG700 Saga Edition Gaming Headset takes stereo audio and creates a virtual multichannel experience that can be enjoyed from almost any audio source.

Gaming/Movie Mode




The Gaming/Movie mode enhances spatial depth and improves surround envelopment for a much more realistic experience.

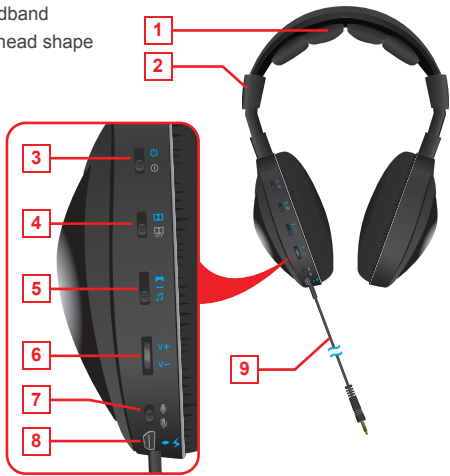
Music Mode

The Music Mode improves directionality of musical recordings by pulling vocals out into the front, while opening up the sound stage for a more lifelike sound.

Normal Mode

The Normal Mode bypasses the EQ settings for listening to audiobooks or for when a plain, uncolored sound experience is desired.

1. Ergonomically designed headband
2. Adjustment setting to fit any head shape
3. Power On / Off
4. Dolby Pro Logic IIx Surround amplifier On / Off
5. Dolby EQ Mode
 - Gaming / Movie Mode 
 - Normal Mode 
 - Music Mode 
6. Volume Up / Down
7. Microphone On / Off
8. Charging input (micro USB)
9. 3.5mm stereo plug



Storage GHG700 Vor Edition Gaming Headset

1. Keep the headset as flat as possible by turning the ear cups 90° as illustrated

2. Keep the headset as compact as possible by turning the ear cups inward as illustrated



The GHG700's internal battery is designed to power the built-in audio amplifier for up to 8 hours of continuous use while gaming, watching movies, listening to music and other audio content. In the event the battery runs out while in use, the GHG700 features a Passive Mode so you can continue listening, but without the benefit of the internal amplifier and Dolby Surround until you recharge your headset.

Passive Mode

When the GHG700 runs out of battery power you can continue listening in Passive Mode which completely bypasses the internal amplifier.

Charging the Battery

1. Plug in the micro USB end of the included cable to the micro USB port on the GHG700
2. Plug in the USB end of the included cable to a power source with an available USB port
3. The LED will turn on while charging around 4 hours+ for full charge
4. The LED will turn off after full charging
5. Fully charged battery lasts +/- 6-7 hours, depending on usage



1. Insert the 3.5mm plug
2. Choose your listening mode:

With Dolby Pro Logic IIx surround

- a. Set Power switch in On position
- b. Set Dolby switch in On position
- c. Set listening mode switch to desired sound setting

Without Dolby Pro Logic IIx surround

- a. Set Power switch in Off position
- b. Set Dolby switch in Off position

Set Microphone switch to On position if in-game communication is needed



Smartphone



Tablet



Laptop PC



Desktop

1. Insert the 3.5mm connector into the headset jack on the PS4 controller
2. Choose your listening mode:

With Dolby Pro Logic IIx surround

- a. Set Power switch in On position
- b. Set Dolby switch in On position
- c. Set listening mode switch to desired sound setting (Gaming Mode is recommended)

Without Dolby Pro Logic IIx surround

- a. Set Power switch in Off position
- b. Set Dolby switch in Off position

Set Microphone switch to On position if in-game communication is needed



Note: Full compatibility requires the PS4 to have System Update 1.50 installed

1. Connect the Xbox One Stereo Headset Adapter (not included) to the Xbox One controller
2. Insert the 3.5mm connector into the headset jack on the Xbox One Stereo Headset Adapter
3. Choose your listening mode:

With Dolby Pro Logic IIx surround

- a. Set Power switch in On position
- b. Set Dolby switch in On position
- c. Set listening mode switch to desired sound setting (Gaming Mode is recommended)

Without Dolby Pro Logic IIx surround

- a. Set Power switch in Off position
- b. Set Dolby switch in Off position

Set Microphone switch to On position if in-game communication is needed



Compliance Information

FCC Statement

This equipment has been tested and found to comply with the limits for a Class B digital device, pursuant to Part 15 of the FCC Rules. These limits are designed to provide reasonable protection against harmful interference in a residential installation. This product generates, uses, and can radiate radio frequency energy and, if not installed and used as directed, it may cause harmful interference to radio communications.

CE Compliance

This device has been tested and found to comply with the following European Union directives: Electromagnetic Capability (2004/108/EC).

Declaration of Conformity and related documents can be downloaded directly from our website: <http://www.iogear.com/product/GHG700/certifications>

Manufactured under license from Dolby Laboratories. Dolby and the double-D symbol are trademarks of Dolby Laboratories.

Limited Warranty

WE'RE HERE TO HELP YOU! NEED ASSISTANCE SETTING UP THIS PRODUCT?

Make sure you:

1. Visit www.iogear.com for more product information
2. Visit www.iogear.com/support for live help and product support

Warranty Information

This product carries a 1 Year Limited Warranty.
For the terms and conditions of this warranty, please go to <http://www.iogear.com/support/warranty>

Register online at
<http://www.iogear.com/register>

Important Product Information
Product Model _____
Serial Number _____

Contact

iogear.custhelp.com
support@iogear.com
www.iogear.com
19641 Da Vinci, Foothill Ranch, CA 92610