



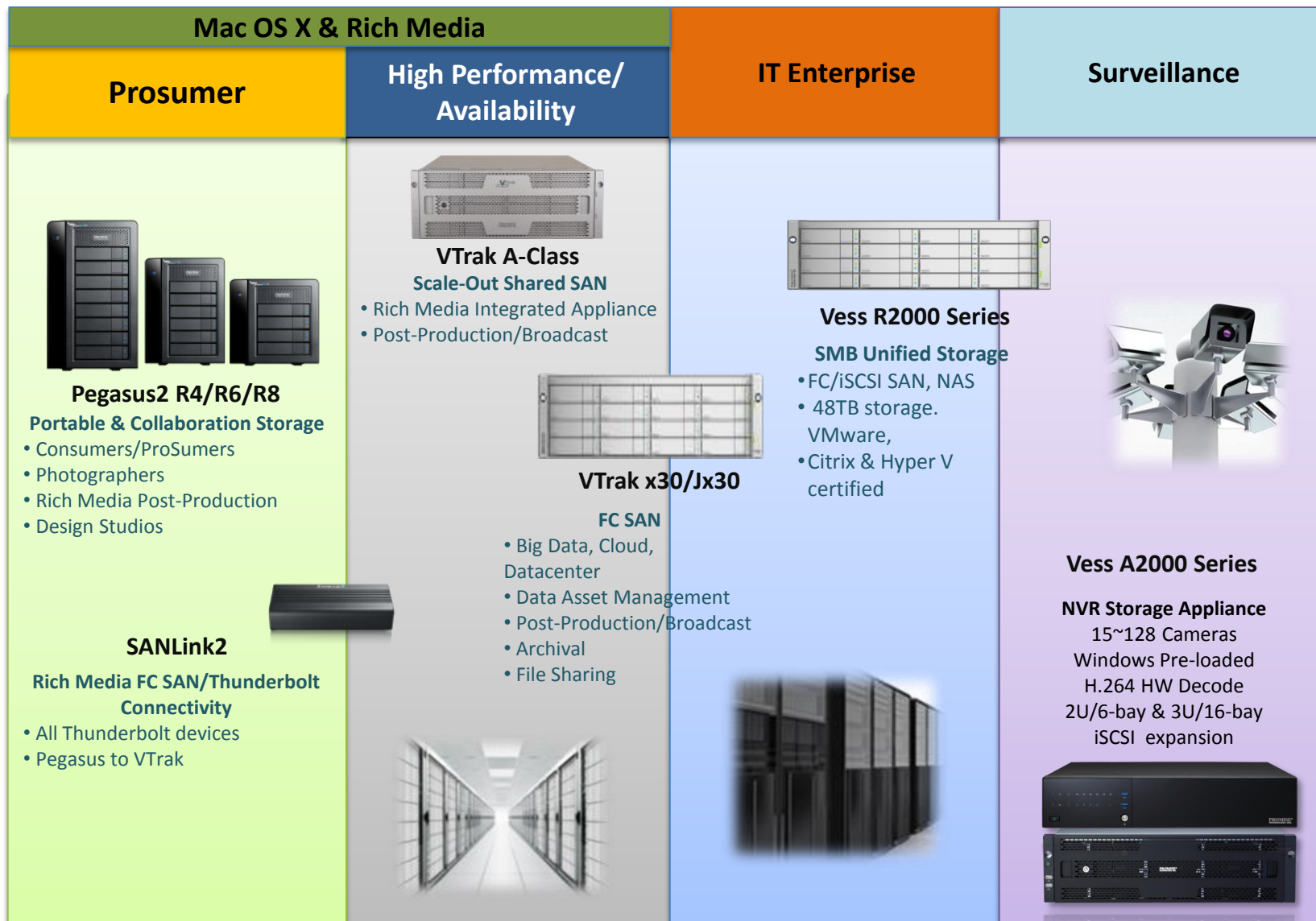
Product Guide

Reseller Edition

April 2014

PROMISE Solution Portfolio

PROMISE[®]
TECHNOLOGY, INC.



Turnkey *Shared SAN* Solution

Primary Metadata Server Secondary Metadata Server



Client Systems

*High performance, low latency
multiuser shared SAN*

- High Availability design for no single point of failure
- Scale-up and Scale-out with Online expansion
- Advanced shared file system – High Performance with simultaneous multi-user access
- Advanced Anti-Fragmentation algorithm 30x more efficient than competing solutions
- LDAP/Active Directory/Open Directory and ACL Support
- Integrated VTrakFS, requires no extra server hardware
- High performance, low latency access in a multiuser shared environment
- Clustered filesystem provides full FC bandwidth to each connected client
- Single, streamlined management software administers SAN & Storage

VTrak A-Class Shared SAN Solutions

PROMISE
TECHNOLOGY, INC.



VTrak A-Class 8G Fibre Channel Shared SAN Solutions

	VTrak A-Class 8G Fibre Channel Shared SAN Solutions		
Part Number	VTA3800FSL	VTA3800FDM	VTA38HFDM3
Form Factor	4U–24Bay		
Drives Included	24 x 4TB SAS (96TB RAW Capacity)		24 x 2TB SAS (48TB RAW Capacity)
Host Connectivity	4 x 8G Fibre Channel	8 x 8G Fibre Channel	
Controller	Single Metadata Server/RAID controller	Dual Metadata Servers/RAID controllers	
Expansion Capability	Cascade up to 9 JBOD per RAID unit with up to 8 storage nodes for a total of 1920 HDD		
Cache	8GB data cache per controller protected with hot-swappable battery backup unit (BBU)		
RAID support	0, 1, 1E, 5, 6, 10, 50, 60		
Client and FS Bundled	4 Universal Clients and 2 File Systems	10 Universal Clients and 4 File Systems	30 Mac OS X Clients and 4 File Systems
Support & Warranty	3-years 24x7 Support with onsite PROMISE ServicePlus next business day warranty		
Supported OS	Mac OS X, Windows , Linux*		
Management Tool	Embedded Web Based management using WebPAM PROe (Ethernet),Command Line Interface (CLI) or Command Line Utility (Serial Port or Ethernet via Telnet, SSH), Third Party Management Support via SNMP, CIM		

Note: SFP's (part X30ADPSFP) are not included with the RAID unit

*Linux client support will be available in future firmware release

VTrak x30 - High-Performance Storage

PROMISE[®]
TECHNOLOGY, INC.



- Active/Active RAID controllers
- Quad 8G Fibre Channel ports per controller
- 4GB cache per RAID controller
- x30 RAID Subsystem available in
 - 3U/16-bay
 - 4U/24-bay
- Expansion Chassis available in
 - 3U/16-bay
 - 4U/24-bay
 - 4U/60-bay
- Scalable via Expansion Chassis up to 240 drives
- Embedded management & monitoring software

- PROMISE Technology is the **only** Apple Qualified Storage Subsystem
- Faster than any other available solutions
- Dramatically lower TCA

VTrak x30 Integrated SAN Solutions

With 4TB HDD

PROMISE
TECHNOLOGY, INC.



VTrak x30 Series 8G Fibre Channel with 4TB HDD Integrated SAN Solutions

Part Number	E630FDQS4 <i>Same as HC854LL/A</i>	E830FDQS4 <i>Same as HC855LL/A</i>	J630SDQS4 <i>Same as HC857LL/A</i>	J830SDQS4 <i>Same as HC856LL/A</i>	J930SDQS4 <i>Same as HC858LL/A</i>
Form Factor	3U – 16Bay	4U–24Bay	3U – 16Bay	4U–24Bay	4U-60Bay
Drives Included	16 x 4TB SAS	24 x 4TB SAS	16 x 4TB SAS	24 x 4TB SAS	60 x 4TB SAS
Host Connectivity	8 x 8G Fibre Channel		6G SAS JBOD		
RAID Controller	Dual RAID controllers		Dual I/O Modules		
Expansion Capability	Cascade up to 9 JBOD		N/A		
Cache	4GB data cache per controller protected with hot-swappable battery backup unit (BBU)		N/A		
RAID support	0, 1, 1E, 5, 6, 10, 50, 60		JBOD		
Support & Warranty	3-years 24x7 Support with onsite PROMISE ServicePlus next business day warranty				
Supported OS	Mac OS X, Windows 2008, Oracle Linux, Red Hat Linux, SuSE Linux, VMware		HBA dependent		
Management Tool	Embedded Web Based management using WebPAM PROe (Ethernet),Command Line Interface (CLI) or Command Line Utility (Serial Port or Ethernet via Telnet, SSH), Third Party Management Support via SNMP, CIM		N/A		

Note: SFP's (part **X30ADPSFP**) are not included with the RAID unit.

VTrak x30 Integrated SAN Solutions

With 2TB and 3TB HDD

PROMISE
TECHNOLOGY, INC.



VTrak x30 Series 8G Fibre Channel 2TB and 3TB HDD Integrated SAN Solutions

Part Number	H4945LL/A	E630FDQS2 <i>Same as H4946LL/A</i>	E630FDQS3 <i>Same as HA260LL/A</i>	E830FDQS2	E830FDQS3 <i>Same as HA261LL/A</i>	H4948LL/A	J630SDQS3 <i>Same as HA262LL/A</i>	J830SDQS	J830SDQS3 Same as HA263LL/A	J930SDQS <i>Same as HA796LL/A</i>
Form Factor	3U – 16Bay			4U–24Bay		3U – 16Bay		4U–24Bay	4U–24Bay	4U-60Bay
Drives Included	8 x 2TB SATA	16 x 2TB SAS	16 x 3TB SAS	24 x 2TB SAS	24 x 3TB SAS	16 x 2TB SATA	16 x 3TB SAS	24 x 2TB SAS	24 x 3TB SAS	60 x 3TB SAS
Host Connectivity	4 x 8G Fibre Channel	8 x 8G Fibre Channel				6G SAS JBOD				
RAID Controller	Single RAID	Dual RAID controllers				Dual I/O Modules				
Expansion Capability	Cascade up to 9 JBOD					N/A				
Cache	4GB data cache per controller protected with hot-swappable battery backup unit (BBU)					N/A				
RAID support	0, 1, 1E, 5, 6, 10, 50, 60					JBOD				
Support & Warranty	3-years 24x7 Support with onsite PROMISE ServicePlus next business day warranty									
Supported OS	Mac OS X, Windows 2008, Oracle Linux, Red Hat Linux, SuSE Linux, VMware					HBA dependent				
Management Tool	Embedded Web Based management using WebPAM PROe (Ethernet),Command Line Interface (CLI) or Command Line Utility (Serial Port or Ethernet via Telnet, SSH), Third Party Management Support via SNMP, CIM					N/A				

Note: SFP's (part **X30ADPSFP**) are not included with the RAID unit.

VTrak x10 Integrated SAN Solutions

With 1TB and 2TB HDD

PROMISE
TECHNOLOGY, INC.



	VTrak x10 Series 4G Fibre Channel Integrated SAN Solutions					
Part Number	TV270VC/A	TV272VC/A	TV299VC/A	H1142VC/A	TV274VC/A	H1144VC/A
Form Factor	3U – 16Bay				3U – 16Bay	
Drives Included	4 x 1TB SATA	8 x 1TB SATA	16 x 1TB SATA	16 x 2TB SATA	16 x 1TB SATA	16 x 2TB SATA
Host Connectivity	2 x 4G Fibre Channel	4 x 4G Fibre Channel			3G SAS JBOD	
RAID Controller	Single RAID	Dual RAID Controllers			Dual I/O Modules	
Expansion Capability	Cascade up to 4 JBOD				N/A	
Cache	2GB data cache per controller protected with battery backup unit (BBU)				N/A	
RAID support	0, 1, 1E, 5, 6, 10, 50, 60				JBOD	
Support & Warranty	3-years 24x7 Support with advanced part replacement warranty					
Supported OS	Mac OS X, Windows 2008, Oracle Linux, Red Hat Linux, SuSE Linux, VMware 4.x				HBA dependent	
Management Tool	Embedded Web Based management using WebPAM PROe (Ethernet),Command Line Interface (CLI) or Command Line Utility (Serial Port or Ethernet via Telnet, SSH), Third Party Management Support via SNMP, CIM				N/A	

Note: SFP's (part VTESFP4G) are not included with the RAID unit.

VTrak Series Integrated Solutions

Service/Support Uplifts

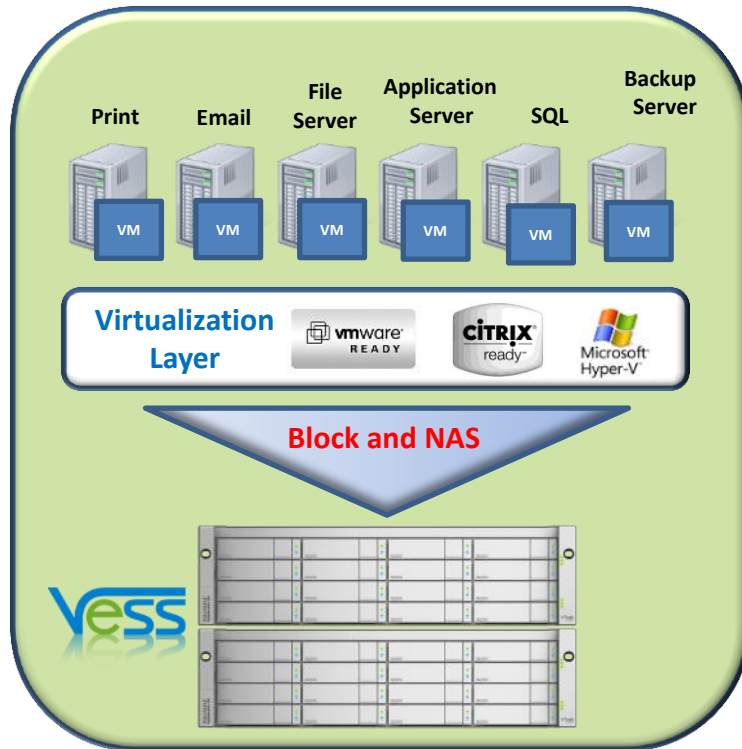
PROMISE[®]
TECHNOLOGY, INC.

PROMISE Technology Service Options	Integrated Ex30 and A-Class	Integrated J630/830	Integrated J930	Integrated Ex10	Integrated Jx10
3-year PROMISE ServicePlus Onsite warranty Next Business Day + 24x7 Phone and Email Support (please verify available service areas)	Included	Included	Included	n/a	n/a
3-year PROMISE ServicePlus Onsite Warranty w/4-hour response + 24x7 Phone and Email Support (please verify available service areas)	n/a	n/a	n/a	SP3YEARA	SP3YEARA
3-year warranty with 24x7 Phone and Email Support with Advanced Parts Replacement	n/a	n/a	n/a	Included	Included
3-year Uplift PROMISE ServicePlus Onsite Warranty w/4-hour response + 24x7 Phone and Email Support (please verify available service areas)	VTXSVCSP3AVU	VTXSVCSP3AVU	VTXSVCSP3AVU	n/a	n/a
2-year extended PROMISE ServicePlus Onsite warranty Next Business Day + 24x7 Phone and Email Support	VTXSVEW2BVH	VTXSVJW2BVH	VTXNB JW92T5	n/a	n/a
2-year extended warranty PLUS uplift to 4-Hour on-site response	VTXSVCEW2AVU	VTXSVCEW2AVU	VTX4HJW92T5	n/a	n/a
2-year extended warranty with 24x7 Phone and Email Support with Advanced Parts Replacement	n/a	n/a	n/a	EW2VTEA	EW2VTJA
Additional 1-year period extended warranty for VTrak Ex10 and Jx10 Series for a total of 6 years. Include HDDs	n/a	n/a	n/a	VTX10EW1T6D	VTX10JW1T6D
Drive Disposal Option with standard 3-year warranty (per chassis)	KYHD3Y	KYHD3Y	n/a	KYHD3Y	KYHD3Y
Drive disposal option for VTrak Ex10 and Ex30 with HDD 2 year Extension (per chassis)	KYHD2YE	KYHD2YE	n/a	KYHD2YE	KYHD2YE

Vess™ R2000 Series

Unified Storage Solutions

PROMISE
TECHNOLOGY, INC.



- High Availability dual-controllers with seamless failover
- 1GbE iSCSI, Hybrid 8G FC/iSCSI SAN and 10GbE iSCSI connectivity
- 2GB Cache upgradeable to 16GB per controller
- High Performance and Availability Block and NAS Support
- CIFS, NFS AFP, FTP WebDAV Protocol Support
- NAS Local and Remote Replication with NAS Online Recovery
- Microsoft ADS and LDAP Support
- PerfectRebuilt, PerfectCache and Online Clone for LUN and Share Disk
- JBOD Expansion up to 112 HDDs
- RAID 0, 1, 1E, 5, 6, 10, 50, 60 Support

- VMware vSphere, Citrix XenServer and Microsoft Hyper-V Certified

Vess™ R2000 Series

1GbE Base-T Unified Storage Solutions

PROMISE
TECHNOLOGY, INC.



Part Number	VR2600ZIDAGE	VR2600ZISAGE	VR2600ZIDAME	VR2600ZISAME	VR2600ZIDANE	VR2600ZISANE	VR2600ZIDUBA	VR2600ZISUBA
Form Factor	3U							
Number of Drive Bay	16							
Drives Included	16 x 2TB NL SAS HDD		16 x 3TB NL SAS HDD		16 x 4TB NL SAS HDD		Diskless	
Host Connectivity	8 x 1GbE	4 x 1GbE	8 x 1GbE	4 x 1GbE	8 x 1GbE	4 x 1GbE	8 x 1GbE	4 x 1GbE
RAID Controller/IO Module	Dual RAID Controllers*	Single RAID Controller	Dual RAID Controllers*	Single RAID Controller	Dual RAID Controllers*	Single RAID Controller	Dual RAID Controllers*	Single RAID Controller
Expansion Capability	Cascade up to 6 JBOD							
Availability Features	Three Redundant PSU, hot-swap drives, Predictive Data Migration, PerfectRebuild, Battery Flash Backup							
Processor	64bit 6-core @ 1.1GHz Processor							
Cache	2GB per controller (upgradable to 16GB)							
RAID support	0,1,1E, 5, 6, 10 (0+1), 50, 60							
Support & Warranty	3-Year 8x5 Support with advanced part replacement and credit card guaranteed							
Supported OS	Windows 2003, Vista, 7, 2008, RedHat Linux, SuSE Linux, Ubuntu, CentOS, VMware, XenServer, Hyper-V							
Management Tool	WebPAM PROe/SNMP via Ethernet, CLI/CLU via RJ-11 or Ethernet, OPAS/UPS Monitor via USB, Ethernet, RJ-11 Serial Port, USB, SNMP, SSH, Telnet, SLP							

Note: *SAS-to-SATA adapters (part **VRST6GBJ4P**) are required for SATA HDD with DUAL RAID controller unit.

Vess™ R2000 Series

Combo 10GbE & 1GbE Base-T Unified Storage Solutions

PROMISE
TECHNOLOGY, INC.



Part Number	VR2600TIDAGE	VR2600TISAGE	VR2600TIDAME	VR2600TISAME	VR2600TIDANE	VR2600TISANE	VR2600TIDAAA	VR2600TISABA
Form Factor	3U							
Number of Drive Bay	16							
Drives Included	16 x 2TB NL SAS HDD		16 x 3TB NL SAS HDD		16 x 4TB NL SAS HDD		Diskless	
Host Connectivity	4 x 10GbE and 8 x 1GbE	2 x 10GbE and 4 x 1GbE	4 x 10GbE and 8 x 1GbE	2 x 10GbE and 4 x 1GbE	4 x 10GbE and 8 x 1GbE	2 x 10GbE and 4 x 1GbE	4 x 10GbE and 8 x 1GbE	2 x 10GbE and 4 x 1GbE
RAID Controller/IO Module	Dual RAID Controllers*	Single RAID Controller	Dual RAID Controllers*	Single RAID Controller	Dual RAID Controllers*	Single RAID Controller	Dual RAID Controllers*	Single RAID Controller
Expansion Capability	Cascade up to 6 JBOD							
Availability Features	Three Redundant PSU, hot-swap drives, Predictive Data Migration, PerfectRebuild, Battery Flash Backup							
Processor	64bit 6-core @ 1.1GHz Processor							
Cache	2GB per controller (upgradable to 16GB)							
RAID support	0,1,1E, 5, 6, 10 (0+1), 50, 60							
Support & Warranty	3-Year 8x5 Support with advanced part replacement and credit card guaranteed							
Supported OS	Windows 2003, Vista, 7, 2008, RedHat Linux, SuSE Linux, Ubuntu, CentOS, VMware, XenServer, Hyper-V							
Management Tool	WebPAM PROe/SNMP via Ethernet, CLI/CLU via RJ-11 or Ethernet, OPAS/UPS Monitor via USB, Ethernet, RJ-11 Serial Port, USB, SNMP, SSH, Telnet, SLP							

Note: *SAS-to-SATA adapters (part **VRST6GBJ4P**) are required for SATA HDD with DUAL RAID controller unit.

Vess™ R2000 Series

Combo 8G Fibre Channel & 1GbE Unified Storage Solutions

PROMISE
TECHNOLOGY, INC.



Part Number	VR2600FIDAGE	VR2600FISAGE	VR2600FIDAME	VR2600FISAME	VR2600FIDANE	VR2600FIDANE	VR2600FIDUBA	VR2600FISUBA
Form Factor	3U							
Number of Drive Bay	16							
Drives Included	16 x 2TB NL SAS HDD		16 x 3TB NL SAS HDD		16 x 4TB NL SAS HDD		Diskless	
Host Connectivity	8 x 1GbE	4 x 1GbE	8 x 1GbE	4 x 1GbE	8 x 1GbE	4 x 1GbE	8 x 1GbE	4 x 1GbE
RAID Controller/IO Module	Dual RAID Controllers*	Single RAID Controller	Dual RAID Controllers*	Single RAID Controller	Dual RAID Controllers*	Single RAID Controller	Dual RAID Controllers*	Single RAID Controller
Expansion Capability	Cascade up to 6 JBOD							
Availability Features	Three Redundant PSU, hot-swap drives, Predictive Data Migration, PerfectRebuild, Battery Flash Backup							
Processor	64bit 6-core @ 1.1GHz Processor							
Cache	2GB per controller (upgradable to 16GB)							
RAID support	0,1,1E, 5, 6, 10 (0+1), 50, 60							
Support & Warranty	3-Year 8x5 Support with advanced part replacement and credit card guaranteed							
Supported OS	Windows 2003, Vista, 7, 2008, RedHat Linux, SuSE Linux, Ubuntu, CentOS, VMware, XenServer, Hyper-V							
Management Tool	WebPAM PROe/SNMP via Ethernet, CLI/CLU via RJ-11 or Ethernet, OPAS/UPS Monitor via USB, Ethernet, RJ-11 Serial Port, USB, SNMP, SSH, Telnet, SLP							

Note: *SFP's (part **VRSFP8G**) are not included with the RAID unit. SAS-to-SATA adapters (part **VRST6GBJ4P**) are required for SATA HDD with DUAL RAID controller unit.

Vess™ J2000 Series

6G SAS Expansion Options

PROMISE
TECHNOLOGY, INC.



Part Number	VJ2600SZDANE	VJ2600SZSANE	VJ2600SZDAME	VJ2600SZSAME	VJ2600SZDAGE	VJ2600SZSAGE	VJ2600SZDUBA	VJ2600SZSUBA
Form Factor	3U						3U	
Number of Drive Bay	16						16	
Drives Included	16 x 4TB NL SAS HDD		16 x 3TB NL SAS HDD		16 x 2TB NL SAS HDD		Diskless	
Host Connectivity	6G SAS						6G SAS	
RAID Controller/IO Module	Dual I/O Modules*	Single I/O Modules	Dual I/O Modules*	Single I/O Modules	Dual I/O Modules*	Single I/O Modules	Dual I/O Modules*	Single I/O Modules
Availability Features	Three Redundant PSU and hot-swap drives							
Processor	N/A							
Cache	N/A							
RAID support	JBOD							
Support & Warranty	3-Year 8x5 Support with advanced part replacement and credit card guaranteed							
Supported OS	HBA dependent and refer to the latest compatibility list							

Note: *SAS-to-SATA adapters (part **VRST6GBJ4P**) are required for SATA HDD with DUAL RAID controller unit.

Vess™ R2000 Series

Service/Support Uplifts



PROMISE Technology Service Options	Integrated and Non-integrated Vess R2000
3-Year 9x5 Support with advanced part replacement and credit card guaranteed warranty	Included
3-Year 8 x 5 support with PROMISE ServicePlus-NBD Service for USA/Canada for Vess2000 Series RAID Head with or without Drives	VR2KSPNBDAA
3-Year 8 x 5 support with PROMISE ServicePlus-NBD Service for USA/Canada for Vess J2000 Series JBOD with or without Drives	VJ2KSPNBDAA
2-Year Ext Warranty.Extends standard warranty by 2YRS USA/Canada for VessR2000 RAID Head with or without Drives	VR2KEW2YRAA
2-Year Ext Warranty.Extends standard warranty by 2YRS USA/Canada for Vess J2000 JBOD with or without Drives	VJ2KEW2YRAA
3-Year PROMISE 24x7 Support for USA/Canada for Vess2000 Series RAID Head with or without Drives	VR2KSE3YRAA
3-Year PROMISE 24x7 Support for USA/Canada for Vess J2000 Series JBOD with or without Drives	VJ2KSE3YRAA
2-Year Ext Extends 24x7 Support by 2YRS USA/Canada for VessR2000 RAID Head with or without Drives	VR2KSE2YRAA
2-Year Ext Extends 24x7 Support by 2YRS USA/Canada for Vess J2000 JBOD with or without Drives	VJ2KSE2YRAA

Vess A2000 Storage Appliance

PROMISE[®]
TECHNOLOGY, INC.

- **A Storage Server with native RAID redundancy/Protection**
 - Industrial FRU design for easy maintenance
 - Aimed to focus on midsize to large scale video surveillance installations
 - Windows (WS7P) embedded
 - SAS or iSCSI expansion for long-term archive
 - Built-in utilities for system management
- **Purpose-built for video surveillance application**
 - Built-in HW decode and supports dual displays (VGA and HDMI)
 - Optimized for video surveillance recording
 - Utilities and SDK package for advanced integration



Easy – Fast/Reliable – Scalable – Low Cost

Vess™ A2000 Series

NVR Appliance for Video Surveillance

PROMISE
TECHNOLOGY, INC.



Vess
A2000 Series



Part Number	VA2600GZSAIE	VA2600GZSAKE	VA2200GZSAIH	VA2200GZSAKH
Form Factor	3U		2U	
Number of Drive Bay	16		6	
Drives Included	16 x 2TB Enterprise HDD	16 x 3TB Enterprise HDD	16 x 2TB Enterprise HDD	16 x 3TB Enterprise HDD
Host Connectivity	4 X 1GbE Ports			
Number Camera Support	64-128 FHD Camera		15-64 FHD Camera	
Pre-loaded OS	Windows Embedded Standard 7 Runtime (WS7P) Standard			
Expansion Capability	Via iSCSI using Vess R2000 Series			
Availability Features	Redundant PSU, hot-swap drives, Predictive Data Migration, Video Surveillance Mode			
Processor	Xeon E3-1245V2		i3-3225	
Cache	8GB		4GB	
Boot Disk Capacity	32GB mSATA		16GB mSATA	
RAID support	0,1,1E, 5, 6, 10 (0+1), 50, 60			
Support & Warranty	3-Year 8x5 Support with advanced part replacement and credit card guaranteed			
VMS Support	Milestone, Genetec			
Management Tool	WebPAM PROe/SNMP via Ethernet, CLI/CLU via RJ-11 or Ethernet, OPAS/UPS Monitor via USB, Ethernet, RJ-11 Serial Port, USB, SNMP, SSH, Telnet, SLP			

Vess™ A2000 Series

Service/Support Uplifts





PROMISE Technology Service Options	Integrated Vess A2000
3-Year 9x5 Support with advanced part replacement and credit card guaranteed warranty	Included
3 Year PROMISE 24x7 Support for USA.Canada for Vess A Series with Drives	VA2KSP3YRAZ
3 Year PROMISE ServicePlus-NBD Service for USA.Canada for Vess A Series w/Drives	VA2KSPNBDAZ
2 Year Ext Extends 24x7 Support for USA.Canada for Vess A Series with Drives	VA2KSE2YRAZ
2 Year Extends PROMISE ServicePlus-NBD Service for USA.Canada for Vess A Series w/Drives	VA2KSENBDAZ
2 Year Ext Warranty.Extends standard warranty by 2YRS USA.Canada for Vess A Series w/Drives	VA2KEW2YRAZ

VessRAID/VessJBOD 1000 Series

Entry-level Integrated/Unified Storage Solutions

PROMISE
TECHNOLOGY, INC.



<div>VessRAID 1830</div> 		<div>VessRAID 1840</div> 			VessJBOD 1830	VessJBOD 1840
VR1830SNAC1C	VR1830INAC2C	VR1840FNAC2C	VR1840SNAC1C	VR1840INAC2C	VJ1830NAC1C	VJ1840NAC1C
2U		3U			2U	3U
12		16			12	16
8 x 2TB Enterprise SATA HDD					8 x 2TB Enterprise SATA HDD	
2 x SAS	4 x iSCSI/NAS	2 x 8G FC/ 2 x iSCSI/NAS	2 x SAS	4 x iSCSI/NAS	SAS	
NAS Volume Clone, NAS replication and NAS Fusion on NAS supported systems					N/A	
Cascade up to 6 JBOD					N/A	
Dual power supply and hot-swap drives					Dual power supply and hot-swap drives	
Single (Intel® IOP348 1.2Ghz)					N/A	
512MB upgradeable to 2GB (upgrade part VTEMEM2G)					N/A	
0,1,1E, 5, 6, 10 (0+1), 50, 60					JBOD	
3-Year 8x5 Support with advanced part replacement and credit card guaranteed						
Windows 2000, XP, 2003, Vista, 2008, Windows 7, Redhat Linux, SuSe Linux, FreeBSD 7.0, Ubuntu, Centos, VMware ESX 4.x					HBA dependent	
Embedded Web Based management using WebPAM PROe (Ethernet),Command Line Interface (CLI) or Command Line Utility (Serial Port or Ethernet via Telnet, SSH					N/A	

Note: SFP's (part X30ADPSFP) are not included with the RAID unit

Pegasus2

DAS With Thunderbolt™ 2 Technology

PROMISE
TECHNOLOGY, INC.



Pegasus2 R2
8TB Capacity

Pegasus2 R6
12TB and 18TB
Capacity

Pegasus2 R8
24TB and 32TB
Capacity



- **Thunderbolt™ 2 Host Connectivity with 20Gb/s bi-directional / single channel connectivity speeds**
- **Designed for the 4K environment with 15Gbps requirements**
- **Transfer and display 4K video files simultaneously**
- **Backup terabytes of data in minutes rather than hours**
- **Hot-Swappable Bays for Effortless Replacement of Failed Drive**
- **Advanced RAID Engine**
- **RAID Level Supported:**
 - R4: RAID: 0, 1, 1E, 5, 6, 10
 - R6/R8: RAID 0, 1, 1E, 5, 6, 10, 50

Pegasus2 R-Series

Thunderbolt™ 2 Hardware RAID Storage Solutions

PROMISE
TECHNOLOGY, INC.



PROMISE Pegasus2 Hardware RAID with Thunderbolt™ 2 Storage Solutions

	PROMISE Pegasus2 Hardware RAID with Thunderbolt™ 2 Storage Solutions				
Part Number	P2R4HD8US <i>Same as HE151VC/A</i>	P2R6HD12US <i>Same as HE152VC/A</i>	P2R6HD18US <i>Same as HE153VC/A</i>	P2R8HD24US <i>Same as HE154VC/A</i>	P2R8HD32US <i>Same as HE155VC/A</i>
Number of Bay	4-Bay	6-Bay		8-Bay	
Drives Included	4 x 2TB SATA	6 x 2TB SATA	6 x 3TB SATA	8 x 3TB SATA	8 x 4TB SATA
Host Connectivity	Thunderbolt™ 2 and Thunderbolt™ Cable Included with Unit				
Expansion Capability	Cascade up to 6 devices				
RAID support	0, 1, 5, 6, 10	0, 1, 5, 6, 10, 50		0, 1, 5, 6, 10, 50, 60	
Thunderbolt Ports	2 x Thunderbolt™ 2 Technology Ports at 20Gb/s (2.5GB/s)				
Capacity	5.7TB Formatted with HFS+	9.7TB Formatted with HFS+	14.7TB Formatted with HFS+	20.7TB Formatted with HFS+	27.9TB Formatted with HFS+
Supported OS	Mac OS X 10.8.5 and Newer				
Backup Software	Supports Time Machine in Mac OS X				
Support & Warranty	2 years 9x5 Support with advanced part replacement and credit card guaranteed				

Pegasus and Pegasus2 R-Series

Service/Support Uplifts



PROMISE Technology Service Options	Pegasus R4/R6
2 years 8x5 Support with advanced part replacement and credit card guaranteed	Included
2 Year PROMISE 24x7 Phone Support uplift from existing M-F 9-5 for USA.Canada for Pegasus Series R4,R6 and R8	PR2Y24x7stdP
1 Year Extends 24x7 Phone Support by 1YR uplift from existing M-F 9-5 USA.Canada for Pegasus Series R4,R6 and R8	PR1Y24x7extP
2 year PSP (Promise Service Plus) onsite parts replacement. Enhances standard 2 year warranty USA.Canada for Pegasus R4/R6/R8 RAID w/Drives	PR2YPSPstd
1 year PSP (Promise Service Plus) onsite parts replacement. Additional standard 1 year warranty USA.Canada for Pegasus R4/R6/R8 RAID w/Drives	PR1YPSPext
1 Year Ext Warranty. Extends standard warranty by 1YR USA.Canada for Pegasus R4/R6/R8 RAID w/Drives and does not offer onsite parts replacement PSP (Promise Service Plus)	PR1Yext

SANLink2

8G Fibre Channel to Thunderbolt 2 Bridge

PROMISE
TECHNOLOGY, INC.

SANLink2



Part Number	Description
SLF2102NAA <i>Same as HE553LL/A</i>	SANLink 8G Fibre Channel to Thunderbolt™ 2 Bridge

- Dual 8G Fibre Channel ports with auto negotiation of 1, 2 and 4Gbps
- Host connectivity using Thunderbolt™ 2 ports
- Dual Thunderbolt™ ports supporting daisy-chaining of peripherals
- Fully qualified Mac OS X, Mac OS X Server, Final Cut Studio and Xsan solution
- Qualified solution with PROMISE VTrak x30 (8Gbps FC) and x10 Series (4Gbps FC) storage subsystems
- Warranty: 3-years 24x7 Support with advanced part replacement

VTrak x30 Empty Chassis Solutions

PROMISE
TECHNOLOGY, INC.



Note: Check published compatibility list for drive qualifications

	VTrak Ex30 Series Empty Chassis				VTrak Jx30 Series Empty Chassis			
Part Number	E630FDNX	E630FSNX	E830FDNX	E830FSNX	J630SDNX	J630SSNX	J830SDNX	J830SSNX
Form Factor/Drive	3U – 16Bay		4U-24Bay		3U – 16Bay		4U-24Bay	
Host Connectivity	4 x 8G Fibre Channel per RAID controller				SAS 6G			
Expansion Capability	Cascade up to 9 JBOD				JBOD cascading supported			
Availability Features	Dual power supply, hot-swapped BBU, Hot-swap drives				Dual power supply and Hot-swap drives			
RAID Controller	Dual RAID	Single RAID	Dual RAID	Single RAID	Dual I/O	Single I/O	Dual I/O	Single I/O
Cache	2GB data cache per controller, protected with hot-swapped battery backup unit (BBU)				N/A			
RAID support	0, 1, 1E, 5, 6, 10, 50, 60				JBOD			
Support & Warranty	3-years 24x7 Support with advanced part replacement warranty							
Supported OS	Windows 2008, Oracle Linux, Red Hat Linux, SuSE Linux, VMware				HBA dependent			
Management Tool	Embedded Web Based management using WebPAM PROe (Ethernet),Command Line Interface (CLI) or Command Line Utility (Serial Port or Ethernet via Telnet, SSH), Third Party Management Support via SNMP, CIM				N/A			

Note: SFP's (part **X30ADPSFP**) are not included with the RAID unit. SAS-to-SATA adapters (part **X30BDGLFQUAD**) are required for SATA HDD with DUAL RAID controller unit.

VTrak x10 Empty Chassis Solutions

PROMISE
TECHNOLOGY, INC.



Note: Check published compatibility list for drive qualifications

	VTrak Ex10 Series Empty Chassis				VTrak Jx10 Series Empty Chassis	
Part Number	VTE610fD	VTE610fS	VTE610sD	VTE610sS	VTJ610sD	VTJ610sS
Form Factor/Drive	3U – 16Bay				3U – 16Bay	
Host Connectivity	4G Fibre Channel		SAS 3G		SAS 3G	
Port Per Controller	2 x 4G FC		4 x SAS 3G		N/A	
Expansion Capability	Cascade up to 4 JBOD				JBOD cascading supported	
Availability Features	Dual power supply and Hot-swap drives				Dual power supply and Hot-swap drives	
RAID Controller	Dual RAID	Single RAID	Dual RAID	Single RAID	Dual I/O	Single I/O
Cache	512MB data cache per controller, protected with battery backup unit (BBU) 2GB cache upgrade option available (upgrade part VTEMEM2G)				N/A	
RAID support	0, 1, 1E, 5, 6, 10, 50, 60				JBOD	
Support & Warranty	3-years 24x7 Support with advanced part replacement warranty					
Supported OS	Windows 2008, Red Hat Linux, SuSE Linux, VMware 4.x				HBA dependent	
Management Tool	Embedded Web Based management using WebPAM PROe (Ethernet),Command Line Interface (CLI) or Command Line Utility (Serial Port or Ethernet via Telnet, SSH), Third Party Management Support via SNMP, CIM				N/A	

Note: SFP's (part VTESFP4G) are not included with the RAID unit. SAS-to-SATA adapters (part VTSATAMUX4P) are required for SATA HDD with DUAL RAID controller unit.

Channel Service/Support Uplifts

VTrak x10 and x30 Series Empty Chassis



PROMISE Technology Service Options	Ex30 w/o HDD	Jx30 w/o HDD	Ex10 w/o HDD	Jx10 w/o HDD
3-year warranty with 24x7 Phone and Email Support with Advanced Parts Replacement	Included	Included	Included	Included
2-year extended warranty with 24x7 Phone and Email Support with Advanced Parts Replacement	EW2VTE	EW2VTJ	EW2VTE	EW2VTJ
3-year PROMISE ServicePlus Onsite Warranty w/4-hour response + 24x7 Phone and Email Support (please verify available service areas)	SP3YEAR	SP3YEAR	SP3YEAR	SP3YEAR
5-year PROMISE ServicePlus Onsite Warranty w/4-hour response (please verify available service areas)	SP5YEAR	SP5YEAR	SP5YEAR	SP5YEAR
Additional 1-year period extended warranty for VTrak Ex10 and Jx10 Series for a total of 6 years. Does not include HDDs	n/a	n/a	VTX10EW1T6	VTX10JW1T6

Apple/PROMISE

Part Number Cross Reference



Apple	PROMISE	Description	Apple	PROMISE	Description
HA260LL/A	E630FDQS3	3U/16-Bay RAID System 48TB Raw Capacity 16x3TB SAS drives Dual controller	HA265LL/A	X30DVSA3	PROMISE VTrak x30 Series 3TB SAS Drive Module
HA261LL/A	E830FDQS3	4U/24-Bay RAID System 72TB Raw Capacity 24x3TB SAS drives Dual controller	H1142VC/A	H1142VC/A	3U/16-Bay RAID System 32TB Raw Capacity 16x2TB SATA drives Dual controller
HA262LL/A	J630SDQS3	3U/16-Bay Expansion Chassis 48TB Raw Capacity 16x3TB SAS drives Dual I/O Module	TV274VC/A	TV274VC/A	3U/16-Bay Expansion Chassis 16TB Raw Capacity 16x1TB SATA drives Dual I/O Module
HA263LL/A	J830SDQS3	4U/24-Bay Expansion Chassis 72TB Raw Capacity 24x3TB SAS drives Dual I/O Module	TV299VC/A	TV299VC/A	3U/16-Bay RAID System 16TB Raw Capacity 16x2TB SATA drives Dual controller
HA796LL/A	J930SDQS	4U/60-Bay Expansion Chassis 180TB Raw Capacity 60x3TB SAS drives Dual I/O Module	TV272VC/A	TV272VC/A	3U/16-Bay RAID System 8TB Raw Capacity 8x1TB SATA drives Dual controller
HA4945LL/A	H4945LL/A	3U/16-Bay RAID System 16TB Raw Capacity 8x2TB SATA drives Single controller	TV270VC/A	TV270VC/A	3U/16-Bay RAID System 4TB Raw Capacity 4x1TB SATA drives Single controller
HA4946LL/A	H4946LL/A	3U/16-Bay RAID System 32TB Raw Capacity 16x2TB SATA drives Dual controller	HA017VC/A	PR6HD18TUS	Pegasus R Series 6-bay with 6x 3TB SATA HDD High Performance Hardware RAID
HA4947LL/A	H4947LL/A	4U/24-Bay RAID System 48TB Raw Capacity 24x2TB SATA drives Dual controller	H5187VC/A	PR602US	Pegasus R Series 6-bay with 6x 2TB SATA HDD High Performance Hardware RAID
HA4948LL/A	H4948LL/A	3U/16-Bay Expansion Chassis 32TB Raw Capacity 16x2TB SATA drives Dual controller	H5186VC/A	PR601US	Pegasus R Series 6-bay with 6x 1TB SATA HDD High Performance Hardware RAID
HA796LL/A	J930SDQS	4U/60-Bay Dual Controller 6G SAS JBOD Expansion Subsystem includes 60x 3TB 7200-RPM NL-SAS HDD	H5185VC/A	PR402US	Pegasus R Series 4-bay with 4x 2TB SATA HDD High Performance Hardware RAID
HA260LL/A	E630FDQS3	3U/16-Bay Dual Controller RAID Subsystem with 8-Ports 8G Fibre Channel includes 16x 3TB 7200-RPM	H5184VC/A	PR401US	Pegasus R Series 4-bay with 4x 1TB SATA HDD High Performance Hardware RAID
HA263LL/A	E830FDQS3	4U/24-Bay Dual Controller RAID Subsystem with 8-Ports 8G Fibre Channel includes 24x 3TB 7200-RPM	H7293LL/A	SLF1002NAC	PROMISE SANLink adapter provides dual Thunderbolt port to dual 4Gbps Fibre Channel connectivity
HA262LL/A	J630SDQS3	3U/16-Bay Dual Controller 6G SAS JBOD Expansion Subsystem includes 16x 3TB 7200-RPM NL-SAS HDD	HA269LL/A	X30SPAJ4	Apple VTrak x30 Series 4U Expansion Chassis Service Parts Kit
HA795LL/A	X30KITJ5	PROMISE VTrak x30 Series 4U Ultra-Dense Expansion Chassis Spare Parts Kit (For J930s)	H1144VC/A	H1144VC/A	3U/16-Bay Expansion Chassis 32TB Raw Capacity 16x2TB SATA drives Dual I/O Module
HE151VC/A	P2R4HD8US	Promise Pegasus2 R4 8TB (4 x 2TB SATA) RAID System (US)	HC657VC/A	PR6HD24TUS	Pegasus R Series 6-bay with 6x 4TB SATA HDD High Performance Hardware RAID
HE152VC/A	P2R6HD12US	Promise Pegasus2 R6 12TB (6 x 2TB SATA) RAID System (US)	HE154VC/A	P2R8HD24US	Promise Pegasus2 R8 24TB (8 x 3TB SATA) RAID System (US)
HE153VC/A	P2R6HD18US	Promise Pegasus2 R6 18TB (6 x 3TB SATA) RAID System (US)	HE155VC/A	P2R8HD32US	Promise Pegasus2 R8 32TB (8 x 4TB SATA) RAID System (US)

- Protect Your **Subsystem** Sales
- Get higher margin

PROMISE® Redefining the Dynamics of Data Storage

Enable your success
Deal Registration

Innovative Products
NAS, DAS, RAID cards and storage subsystems

Programs
Reseller and end-user promotions to reward sales success

Sales Tools
Literature, web/ad builder tools and support for shows to gain access to key markets and customers

Training
Education to keep you up-to-date with new products, new markets and new solutions

Support
24 x 7 x 365 phone and email support complemented with a dedicated team of field representatives

Pricing
Design registration & meet comp packages to give you a competitive edge

Authorized Reseller Portal

Registered Reseller Sign In

Email Address

Password

[Forgot Password?](#)


Not Yet Registered?

 Sign up today to become an authorized reseller

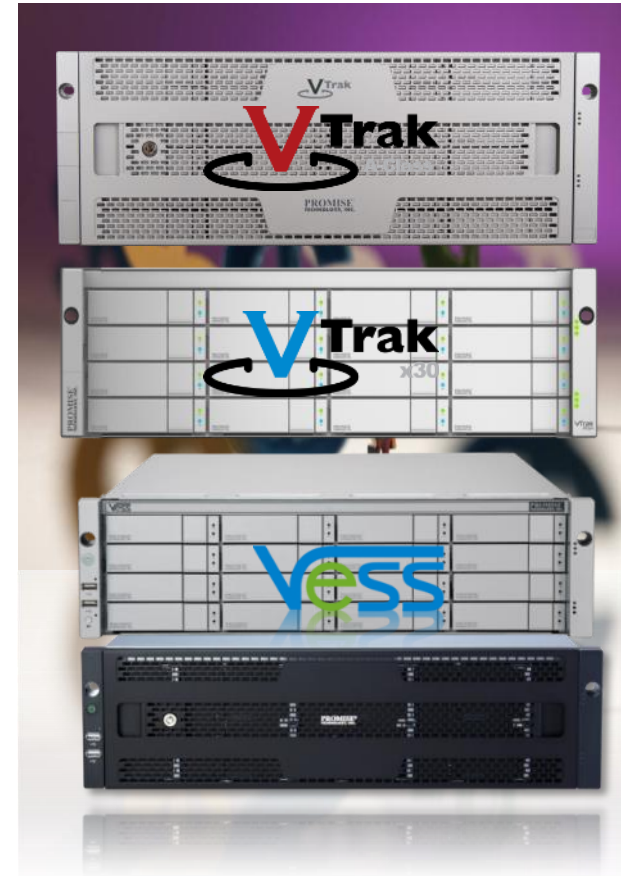
If you're selling RAID and JBOD Storage Subsystems, Direct Attached Storage, Network Attached Storage, or RAID Controllers, PROMISE has a cutting-edge solution to meet your needs. Learn about and Register for the PromiseReward.com Authorized Reseller Program. Enjoy the benefits of membership, including tools, training, and resources - and let Promise be your partner. Sign up today!

NEW

PICK HIT
BroadcastEngineering
2011



Award Winning PROMISE SANLink Adapter with Thunderbolt™ Revolutionizes FC SAN Connectivity



<http://www.PromiseRewards.com>

Why PROMISE...MAP Program

PROMISE[®]
TECHNOLOGY, INC.

- Gain margin on your **Prosumer** Sales
- Contact your Regional Sales Representative on how to be part of the MAP Program



Pegasus J2/J4



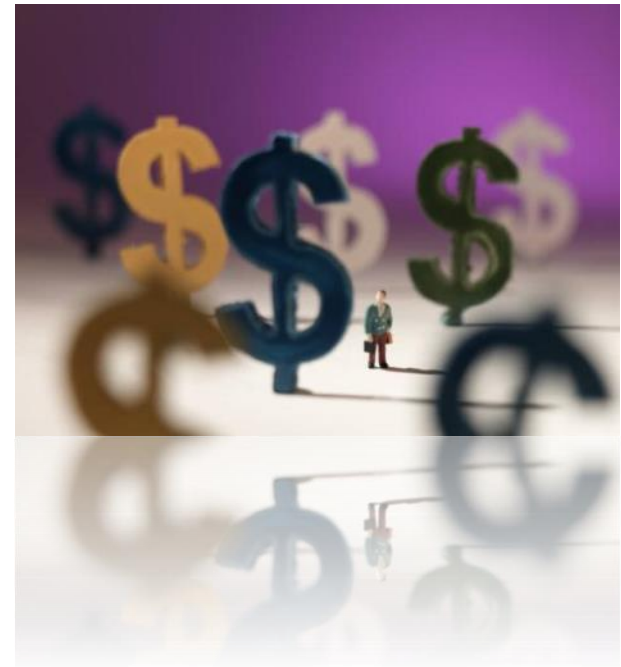
PROMISERewards Minimum Advertised Price Guidelines, Application and Authorization

PROMISE[®]
TECHNOLOGY, INC.

Program Overview

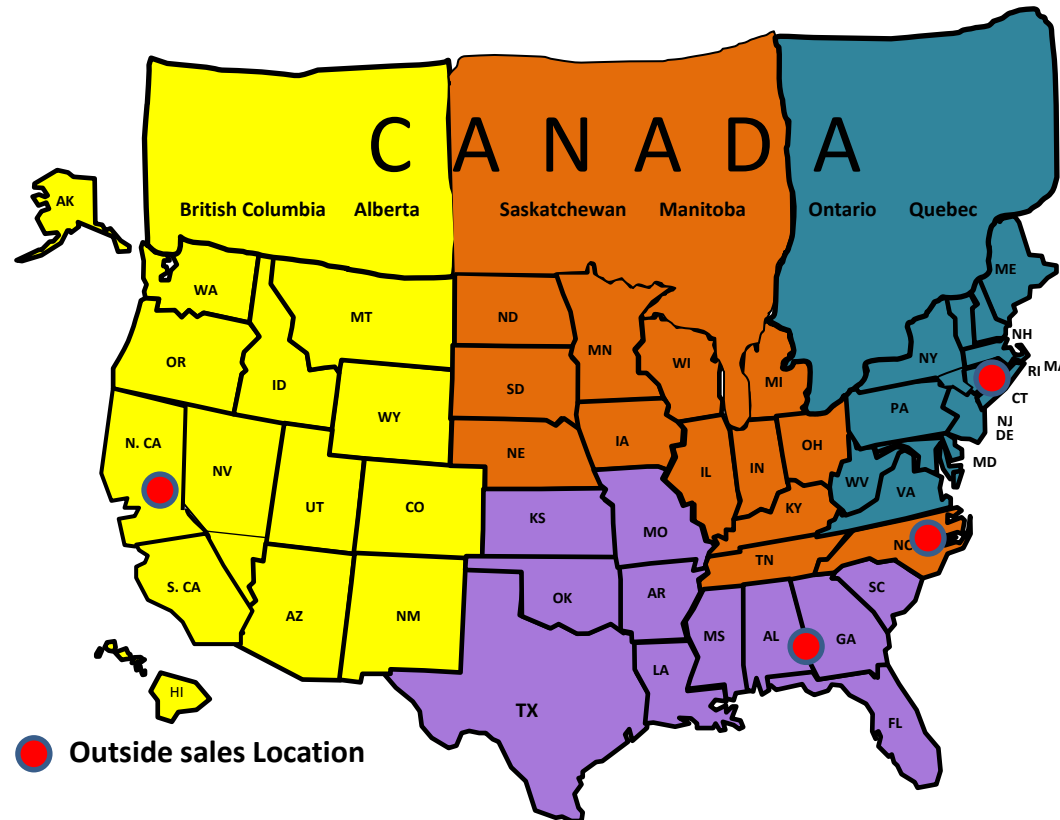
The PROMISERewards Minimum Advertised Price (MAP) program is for PROMISE Technology Online Resellers and is designed to minimize destructive low-price advertising of select PROMISE products. For resellers, the MAP program will help to protect product margins by increasing discounts for those partners who comply with MAP program.

United States and Canadian partners designated as Online Resellers will be eligible for the program.



Channel Field Organization

PROMISE[®]
TECHNOLOGY, INC.



Behrouz Zali
Director of Channel Sales
w: (408) 228-1429
c: (650) 867-7310
Behrouz.Zali@Promise.com

Harry Hoang
Systems Engineer
w: (408) 228-1556
c: (408) 207-8807
Harry.Hoang@Promise.com

Sean Rose
DMR Channel Sales Manager
c: 414-446-8696
Sean.Rose@Promise.com

Mike Maxwell
Channel Distribution Manager
w: (408) 228-1519
c: (714) 673-5179
Michael.Maxwell@Promise.com

Lily Louie
Channel Marketing
w: (408) 228-1432
Lily.Louie@Promise.com

Maribel Sepulveda
Deal Registration/Order Entry
w: (408) 228-1539
Fax: (866) 562-4839
Maribel.Sepulveda@Promise.com

West
Rodney Lopez
Rodney.Lopez@Promise.com
w: (408) 228-1507
c: (408) 910-2626

Inside Sales
Brian Reynolds
w: (408) 228-1572
Brian.Reynolds@Promise.com

Central
Patrick O'Malley
Patrick.Omalley@Promise.com
w: (919) 462-8420
c: (919) 607-5662

Inside Sales
Neelam Lopez
w: (408) 228-1442
Neelam.Lopez@Promise.com

Southeast
Michael Bush
Michael.Bush@Promise.com
w: (408) 228-1438
c: (334) 799-7873

Inside Sales
Neelam Lopez
w: (408) 228-1442
Neelam.Lopez@Promise.com

Northeast
Don Lockyer
Donald.Lockyer@Promise.com
w: (408) 228-1444
c: (860) 874-5401

Inside Sales
Brian Reynolds
w: (408) 228-1572
Brian.Reynolds@Promise.com