

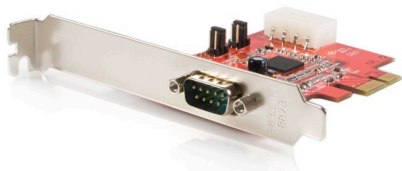
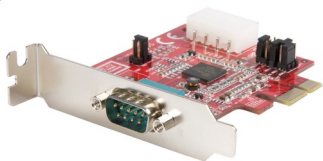
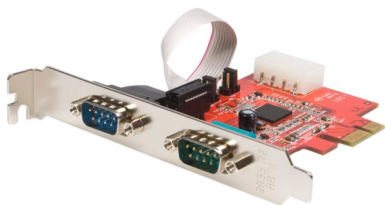
Native PCI Express RS232 Serial Adapter Card with 16950 UART

PEX1S952

PEX2S952

PEX1S952LP

PEX2S952LP



StarTech.com 
Making hard-to-find easy!

FCC Compliance Statement

This equipment has been tested and found to comply with the limits for a Class B digital device, pursuant to part 15 of the FCC Rules. These limits are designed to provide reasonable protection against harmful interference in a residential installation. This equipment generates, uses and can radiate radio frequency energy and, if not installed and used in accordance with the instructions, may cause harmful interference to radio communications. However, there is no guarantee that interference will not occur in a particular installation. If this equipment does cause harmful interference to radio or television reception, which can be determined by turning the equipment off and on, the user is encouraged to try to correct the interference by one or more of the following measures:

- Reorient or relocate the receiving antenna.
- Increase the separation between the equipment and receiver.
- Connect the equipment into an outlet on a circuit different from that to which the receiver is connected.
- Consult the dealer or an experienced radio/TV technician for help.

Use of Trademarks, Registered Trademarks, and other Protected Names and Symbols

This manual may make reference to trademarks, registered trademarks, and other protected names and/or symbols of third-party companies not related in any way to StarTech.com. Where they occur these references are for illustrative purposes only and do not represent an endorsement of a product or service by StarTech.com, or an endorsement of the product(s) to which this manual applies by the third-party company in question. Regardless of any direct acknowledgement elsewhere in the body of this document, StarTech.com hereby acknowledges that all trademarks, registered trademarks, service marks, and other protected names and/or symbols contained in this manual and related documents are the property of their respective holders.

Table of Contents

Introduction	1
Features	1
Package Contents	1
Jumper Configuration	2
Hardware Installation	3
Driver Installation	3
Windows 2000/XP Driver Installation	3
Windows Vista Driver Installation	5
Specifications	7
Technical Support	8
Warranty Information	8

Introduction

Thank you for purchasing a StarTech.com PEX1S952/PEX2S952/PEX1S952LP/PEX2S952LP Native PCI Express 16C950 UART Serial Card. This dual profile Serial card converts a PCI Express slot into one or two RS-232 (DB9) serial connections, while relying on a native, single-chip design for optimal performance and reliability.

Features

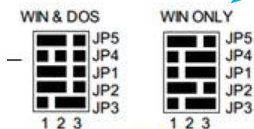
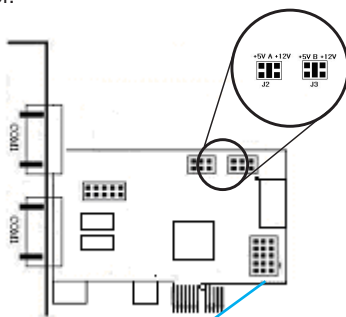
- 128-byte deep FIFO per transmitter and receiver
- Automated in-band software flow control using programmable Xon/Xoff in both directions
- Automated out-of-band hardware flow control using Tx/Rx/RTS/CTS/DSR/DTR/DCD/RI/GND
- Compliant with IEEE1284, SPP/EPP/ECP parallel port
- Compliant with PCI Express base specifications revision 1.1
- High Performance Dual Channel Oxford 950 UART
- Native single-Chip, single lane PCI Express
- Selectable power output on pin 9 for the serial port
- High speed RS-232 serial ports with data transfer rate up to 460.8 Kbps

Package Contents

- 1 X Serial Card (Low Profile bracket preinstalled on LP models)
- 1 X Driver CD
- 1 X Instruction Manual
- 1 X Low Profile Bracket (PEX1S952 only)
- 2 X Low Profile Bracket (PEX2S952 only)
- 1 x Full Profile Bracket (PEX1S952LP/PEX2S952LP only)

Jumper Configuration

The card is specially designed to allow power output from the ninth pin of the connector to enable power up of the connected devices without the use of a power adapter. The card allows user to set each individual port with 5V, 12V, or RI (no power). The user may also choose to draw the needed power from the PC's internal system power supply via an LP4 molex connector.



3x5 Pin Header setting

1. For WIN & DOS setting and Transmission speed 115Kbps MAX
2. For WIN only setting and Transmission speed 460Kbps MAX

Hardware Installation

1. Turn off the power to your computer.
2. Unplug the power cord and remove your computer's cover.
3. Remove the slot bracket from an available PCIe slot.
4. To install the card, carefully align the card's bus connector with the selected PCIe slot on the motherboard. Push the board down firmly.
5. **Optional:** Connect the LP4 molex power connector from the computer power supply to the card. Make sure the Jumper settings on the card are configured properly.
6. Replace the slot bracket's holding screw to secure the card.
7. Replace the computer cover and reconnect the power cord.

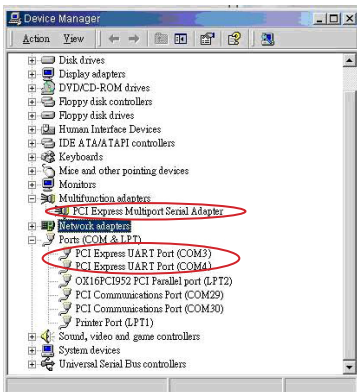
Driver Installation

Windows 2000/XP Driver Installation

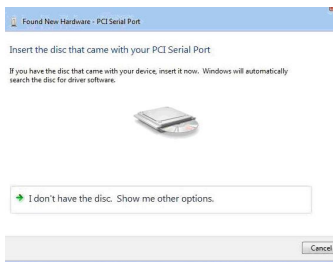
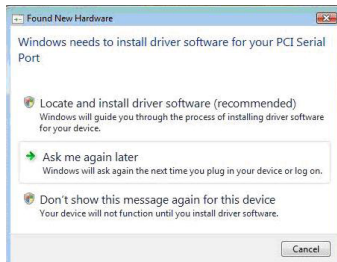
1. At the Add New Hardware Wizard window, click on "Next."
2. Select the option "Search for the best driver for your devices (Recommended)" and click on "Next."
3. Select the option "Specify the location" and type in D:\Uart (where D: is your CD-ROM drive) then click on "Next."
4. Click "Next" and then "Finish" respectively.
5. Remove the disc, then select "Yes" to restart the computer for the setup to take effect.

To verify successful installation on Windows 2000/XP:

1. From the main desktop, right-click on “My Computer”, then select Manage. In the new Computer Management window, select “Device Manager” from the left window panel.
2. Double-click on both “Ports (COM & LPT)” and “Multifunction Adapters”. The Serial Adapter board and additional serial ports (COM ports) should be displayed when successfully installed. The port is ready to be connected to new device(s).



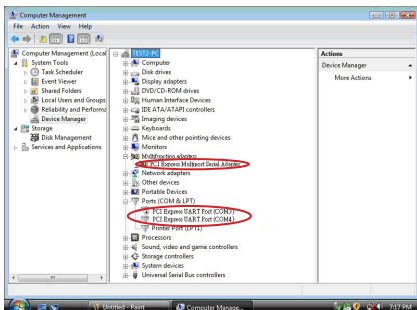
Windows Vista Driver Installation



1. At the Found New Hardware prompt, click on “Locate and install driver software (recommended).”
2. When prompted, insert the disc included with your Serial Card and then click “Next.”
3. A notification will appear informing you that Windows has encountered a problem installing the driver software for your device. Click “close” to continue.
4. When another Found New Hardware prompt appears, install the software from the disc included with your Serial Card and then click “Next.”
5. A notification will appear informing you that Windows has encountered a problem installing the driver software for your device. Click “close” to continue.

To verify successful installation on Windows Vista:

1. From the main desktop, right-click on “Computer”, then select Manage. In the new Computer Management window, select “Device Manager” from the left window panel.
2. Double-click on both “Ports (COM & LPT)” and “Multifunction Adapters”. The Serial Adapter board and additional serial ports (COM ports) should be displayed when successfully installed. The port is ready to be connected to new device(s).



Specifications

	PEX1S952 PEX1S952LP	PEX2S952 PEX2S952LP
Bus Type	PCI Express rev 1.1 (3.3V)	
External Ports	1 x DB9	2 x DB9
Internal Connectors	1 x LP4 molex	
Chipset	Oxford OXPCle952	
UART	16C950	
Power Mode*	5V / 12V / RI (no power)	
Maximum Data Transfer Rate	460 Kbps	
Stop Bits	1, 1.5, 2	
Data Bits	4, 5, 6, 7, 8	
Compatible Operating Systems	Windows 2000/XP/Server 2003/Vista, Linux kernel 2.6.11 or later	

*Selectable power output on Pin 9 of the serial port

Technical Support

StarTech.com's lifetime technical support is an integral part of our commitment to provide industry-leading solutions. If you ever need help with your product, visit www.startech.com/support and access our comprehensive selection of online tools, documentation, and downloads.

Warranty Information

This product is backed by a lifetime warranty. In addition, StarTech.com warrants its products against defects in materials and workmanship for the periods noted, following the initial date of purchase. During this period, the products may be returned for repair, or replacement with equivalent products at our discretion. The warranty covers parts and labor costs only. StarTech.com does not warrant its products from defects or damages arising from misuse, abuse, alteration, or normal wear and tear.

Limitation of Liability

In no event shall the liability of StarTech.com Ltd. and StarTech.com USA LLP (or their officers, directors, employees or agents) for any damages (whether direct or indirect, special, punitive, incidental, consequential, or otherwise), loss of profits, loss of business, or any pecuniary loss, arising out of or related to the use of the product exceed the actual price paid for the product. Some states do not allow the exclusion or limitation of incidental or consequential damages. If such laws apply, the limitations or exclusions contained in this statement may not apply to you.



StarTech.com has been making “hard-to-find easy” since 1985, providing high quality solutions to a diverse IT and A/V customer base that spans many channels, including government, education and industrial facilities to name just a few. We offer an unmatched selection of computer parts, cables, A/V products, KVM and Server Management solutions, serving a worldwide market through our locations in the United States, Canada, the United Kingdom and Taiwan.

Visit **www.startech.com** today for complete information about all our products and to access exclusive interactive tools such as the Cable Finder, Parts Finder and the KVM Reference Guide.