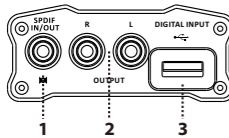


ifi

micro



1. Combo SPDIF Coaxial/Optical Input and Output

The Combo SPDIF socket is auto-switching.

With USB audio signal applied:

- SPDIF Output: Coaxial
- Without USB audio signal applied:
 - SPDIF Input: Coaxial/Optical (Toslink Mini-Plug) Input

Tip: a Toslink Mini-Plug to Toslink adaptor is included for connecting a normal Toslink optical cable.

Tip: The SPDIF standard supports only PCM up to 192kHz.

2. RCA Line Output

Vers l'amplificateur, le récepteur, le système HiFi ou similaire. Voir la section 12 pour plus de détails. Conseil : sur la face inférieure, il est possible de sélectionner Mode "direct" ou "préamplificateur". Dans le mode En mode pré-amplificateur, l'iDSD fonctionne comme un DAC/pré-amplificateur (ne faites la sélection que lorsque l'appareil est éteint).

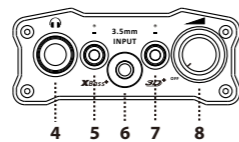


3. USB Input

From a computer, connect via USB cable (this also provides charging for the internal battery.)
From a Smart Device, such as iPhone use a Camera Connection Kit/ Lighting-to-USB Camera Adapter.

Tip: To use the micro iDSD in Battery Power mode, power on the micro iDSD BEFORE connection to the PC otherwise the iDSD will run in USB Power mode.

Tip: The USB input is specially designed so that it can be directly connected to an Apple Camera Connection Kit/Lighting-to-USB Camera Adapter or Android OTG without the need for any adaptor.



4. Headphone jack 6.3mm

Connect headphones.

Tip: With a new pair of IEMs/Headphones, ALWAYS start with the volume no higher than 9 o'clock and with the Power Mode set to 'Eco'.

5. XBass® Plus

XBass® Plus was uniquely designed to extend bass response to suit different headphones.

- For bass shy headphones.
- Direct.

6. Input 3.5mm

From a music source with 3.5mm connection for feeding a direct audio signal (e.g. 3.5mm output from an iPhone.)

7. 3D® Matrix Plus

- ON
- OFF

3D® Matrix Plus for Headphones: recreates a holographic sound field like listening to a pair of speakers.

- This is activated when a 6.3mm headphone has been inserted.

3D® Matrix Plus for Speakers: puts the bass frequencies back outside of the speakers, in-line with the treble and mid-range.

- This is activated when no 6.3mm headphone plug has been inserted.

Tip: These two analogue signal processing systems (3D® Matrix Plus for Headphones and 3D® Matrix Plus for Speakers) are distinctly different and designed for their respective types of audio output.

Tip: Sonically-hindering DSP is NOT used for XBass® Plus nor 3D® Matrix Plus systems. They use the highest-quality discrete components and operate purely in the analogue domain. Hence all the clarity and resolution of the original music is retained.

8. Analogue Volume Control

Power on/off and volume control.

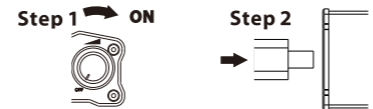
USB Power

Connect to the computer first, and then turn ON the power.



Battery Power

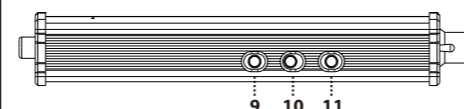
Turn ON the power first, and then connect to the computer.



Conseil : en mode d'alimentation par batterie, le micro iDSD continuera à utiliser l'alimentation par batterie même si le câble USB est branché par la suite.

Conseil : Pour les Apple iPhone/ iPad/iPod Touch, les appareils Android, veuillez utiliser le mode d'alimentation par batterie, sinon vous risquez de recevoir des messages d'erreur de votre appareil.

Conseil : Pour la connexion aux appareils Apple, l'adaptateur USB pour appareil photo Apple est nécessaire. Pour la connexion aux appareils Android, un câble OTG et un support OS approprié sont nécessaires. Pour plus d'informations, veuillez consulter le site www.ifi-audio.com.



9. Power Mode

There are 3 different types of power output levels to drive different headphones from the most sensitive In-Ear-Monitors(IEMs) through to the most demanding over-the-ear headphones.

Approximate listening time (in Battery mode with typical headphones)

Eco = for high-sensitivity IEMs (Default, ~12 hours).

Normal = for medium-sensitivity headphones (~9 hours).

Turbo = for the most-demanding headphones (~6 hours).

Tip: See section 12. For how Power mode is used in conjunction with Direct/Preamplifier mode.

WARNING: when first starting out, do not set the volume control higher than 9 o'clock and only in 'Eco' mode as the headphone amplifier of the iDSD is exceptionally powerful. iFi is not responsible for any headphone/hearing damage arising from incorrect use.

10. Polarity

Adjustable signal polarity of music playback. For a digital signal source only (ie. not for an analogue signal via the 3.5mm input.)



11. Digital Filter

The following are user-selectable:

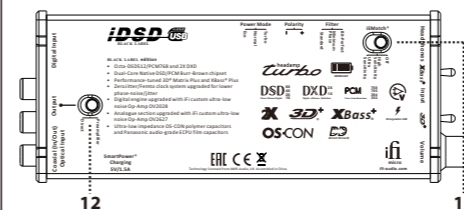


DSD: Extreme/Extended/ Standard Range (analogue) filters

PCM: Bit-Perfect/Minimum-Phase/Standard (digital) filters

DXD: Bit-Perfect Processing (fixed) analogue filter

Tip: For PCM we recommend 'Bit-Perfect' for listening and 'Standard' for measurements. For DSD, select Extreme/Extended/Standard to find the one that sounds best for listening and 'Standard Range' for measurements.



12. Line Direct/Preamplifier Mode

Direct: fixed RCA output (bypass, FULL volume)

Preamp: the iDSD functions as a DAC/preamplifier. The volume control is now enabled for the RCA line output and when used in conjunction with the Power Mode offers gain of:



Eco = 0 dB
Normal/Turbo = 9dB

Tip: Only make the selection with the unit powered off.

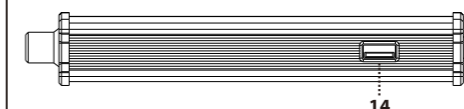
13. iEMatch switch

With the iEMatch, even the most sensitive In-Ear-Monitors (IEMs) can be matched to the iDSD.



Off

High Sensitivity: For High Sensitivity IEMs.
Ultra Sensitivity: For Ultra Sensitivity IEMs.



14. SmartPower®

The USB type 'A' port located to the side is able to recharge a Smart device. SmartPower® will automatically detect an iPhone/Android or similar and commence charging. However, the micro iDSD must be switched OFF as it cannot charge and playback music simultaneously.

Tip: Any USB connected device can be recharged but with larger devices such as tablets, the SmartPower battery will charge, but will be rapidly drained. Hence, it is not recommended for such applications

Tip: MAC OSX has built-in native support for the iDSD.

MS Windows, please download and install the driver software BEFORE connecting the iDSD to the computer (www.ifi-audio.com).

Tip: For the best sound quality, always set the volume control on the computer and the playback software to 100%.

LED

Power ON:

- Magenta
- Blue
- Cyan
- White
- Yellow
- Green
- Green(Flashing)
- Red
- None

Mode

- DSD512 22.5/24.5MHz
- DSD256 11.2/12.2MHz
- DSD128/DSD64 2.8/3.1/5.6/6.2MHz
- DXD705/768kHz
- 176/192kHz DXD352/384kHz
- 44/48/88/96kHz
- Awaiting USB Connection
- Battery Low
- Battery Empty

Power OFF:

LED Color Blue*

Mode Charging

When the iDSD is fully-charged, the Blue LED will no longer be lit.

BLACK LABEL edition

- Performance-tuned 3D® Plus and XBass® Plus
- ZeroJitter/Femto clock system upgraded for lower phase-noise/jitter
- Digital engine upgraded with iFi custom ultra-low noise Op-Amp OV2028
- Analogue section upgraded with iFi custom ultra-low noise Op-Amp OV2627
- Ultra-low impedance OS-CON polymer capacitors and Panasonic audio-grade ECU film capacitors

Specifications

- Formats supported:
 - DSD512/256/128/64, Octa/Quad/Double/Single-Speed DSD
 - DXD(768/705.6/384/352.8kHz), Double/Single-Speed DXD
 - PCM(768/705.6/384/352.8/192/176.4/96/88.2/48/44.1kHz)
 - Filters:
 - PCM - Bit-Perfect Processing/Minimum Phase/Standard
 - DSD - Extreme/Extended/Standard Bandwidth
 - DXD - Bit-Perfect Processing
 - Digital Inputs:
 - High-Speed Asynchronous USB 2.0 (32bit/768kHz)
 - SPDIF Coaxial/Optical
 - Digital Output: SPDIF Coaxial
 - Audio Input: 3.5mm
 - Audio Output:
 - 6.3mm
 - RCA Line out (2V fixed/2V-5V variable)
 - Power Output:
 - Turbo (8.0V max/4,000 mW @ 16 Ohm)
 - Normal (4.0V/1,000 mW @ 16 Ohm)
 - Eco (2.0V/250mW@16 Ohm)
 - Battery: Lithium-polymer 4800mAh
 - Power System: USB BCP V1.2 compliant up to 1500mA charging current
 - Power (max): <2W idle, 4W max
 - Dimensions: 177(l) x 67(w) x 28(h) mm
 - Weight: 310g (0.68 lbs)
 - Warranty period: 12 months
- Specifications are subject to change without notice.

ifi-audio.com

Ver1.0

ifi

warranty

In order to activate the warranty for this iFi product, you must register with the iFi website.

Component :

Serial no:

Terms & Conditions

iFi guarantees that this iFi product shall be free from defects in materials and workmanship for a period of 1 year for parts and labour.

The warranty period begins at the date of retail sale by an authorized iFi distributor/dealer and is subject to the following requirements and understandings:

- It is the responsibility of the buyer within 30 days from the original sale, to register and activate the product warranty with the iFi website.
- The original invoice must be produced for authentication prior to any warranty claim.
- The iFi product must not have been modified in any manner whatsoever, or the warranty will immediately become void.
- The iFi warranty is only valid in the country of original sale.
- The product must not have been stored in a humid environment; nor subjected to weather, water, or saltwater spray.
- iFi shall not, under any circumstances, be liable for any incidental or consequential damages arising from the loss of property or other damage or losses due to the failure of an iFi product. iFi is not liable for loss of use or inconvenience caused by the failure of an iFi product. iFi is not liable for damage caused to other audio components because of the failure of an iFi product.
- During the warranty period, iFi will repair the product to working order, or, at iFi's option, replace the defective module with a similar available product.
- All repairs performed after expiry of the warranty period will be charged to the owner and will carry a 180-day warranty on parts and labour. The customer is responsible for shipping the unit to the iFi distributor in the original packaging. This includes the payment of any shipping charges and related taxes.
- Should any warranty issues arise, the decision of iFi is full and final.

ifi-audio.com