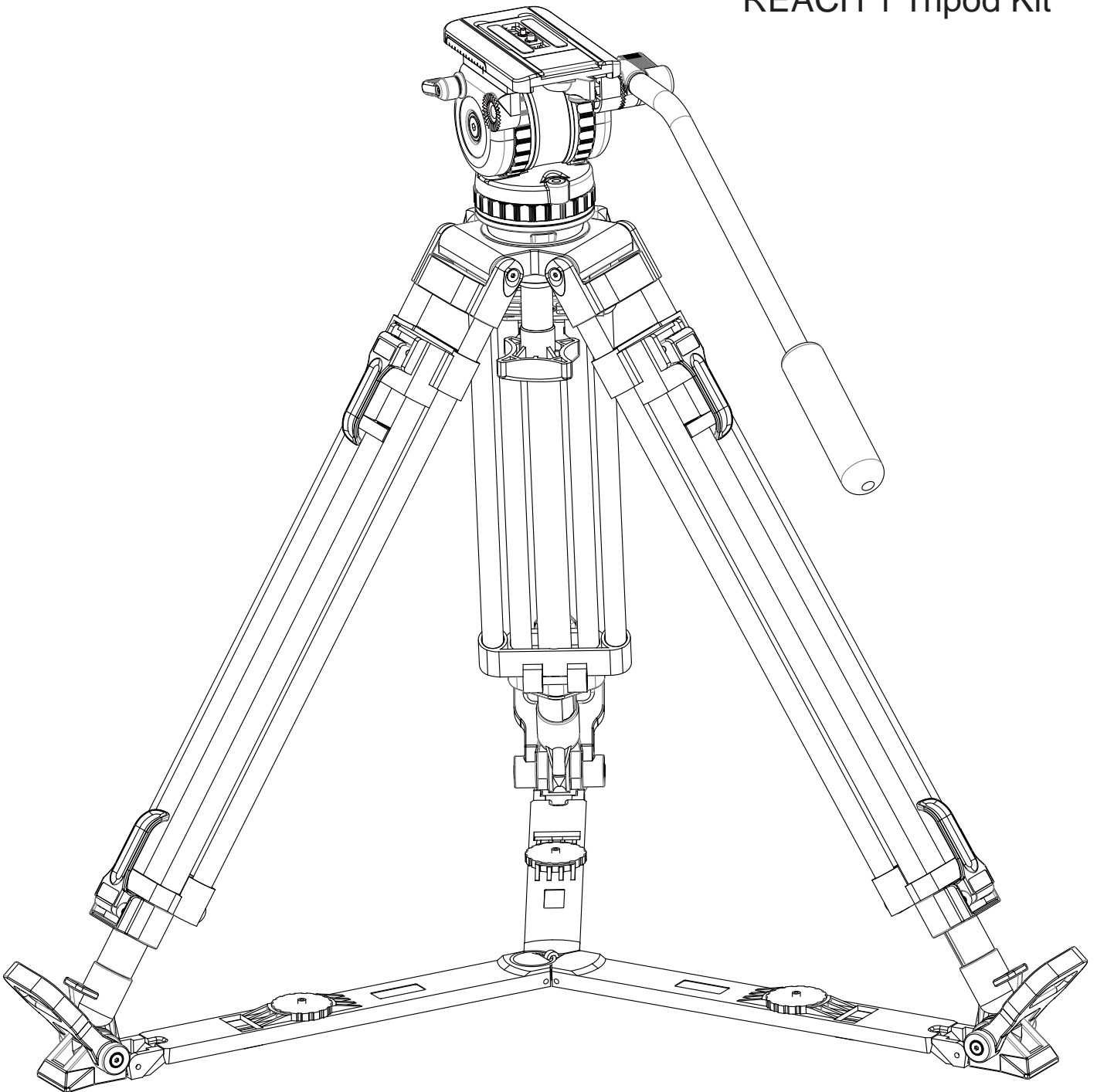




# Maintenance Manual

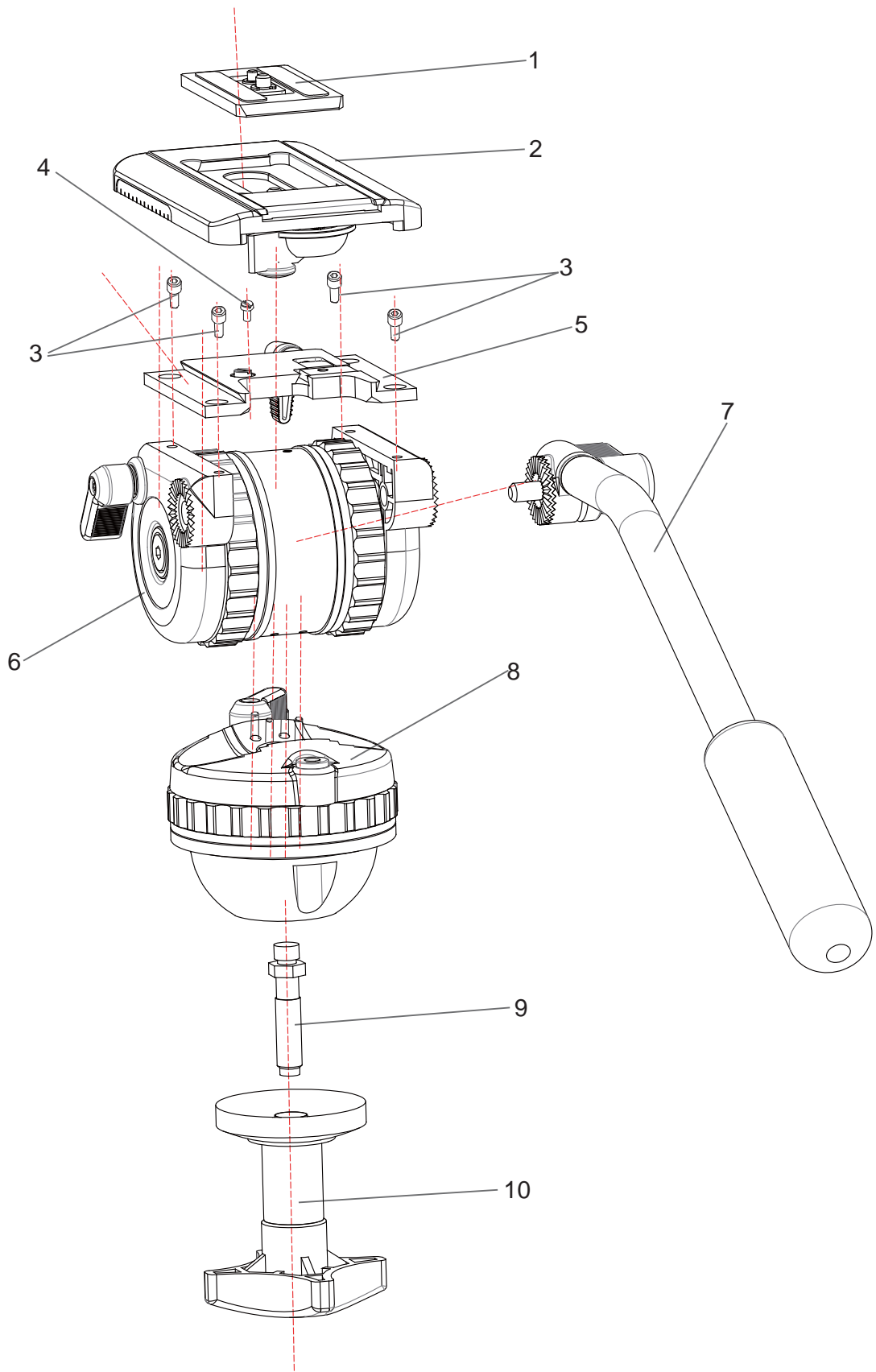
Professional Tripod

## REACH 1 Tripod Kit



[www.secced.com](http://www.secced.com)

---



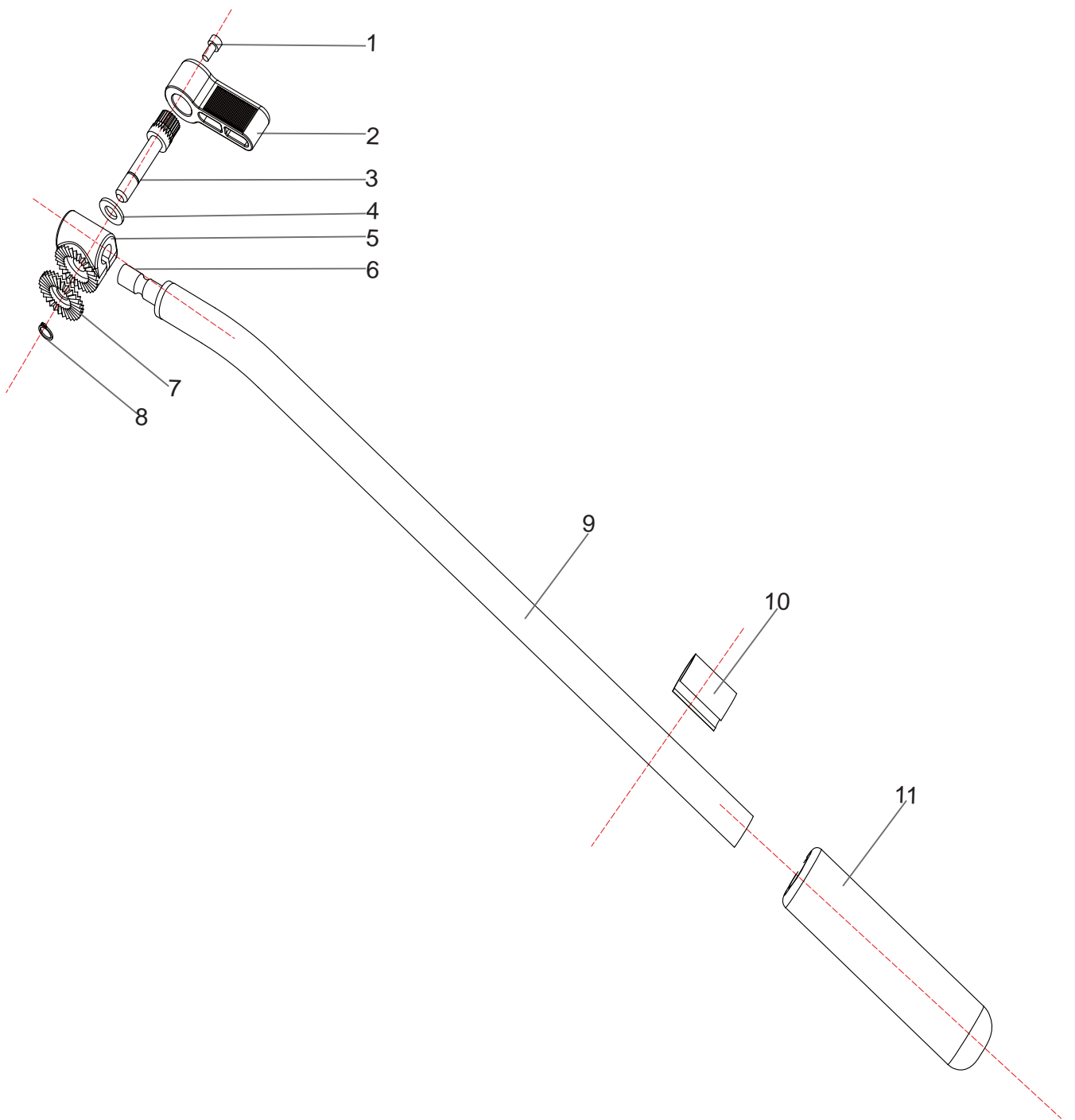
**Fig 1 REACH 1 Pan and Tilt Fluid Head**

---

## Fig 1 Reach 1 Pan and Tilt Fluid Head

Item No.	Part No.	Nomenclature	Qty	Price (\$)
1	SC343-00-12	Wedge plate unit	1	
2	SC341-00-05	Sliding plate unit	1	
3	GBT70NYM4x12	Screw, Cheese head, hex socket M4x8	4	
4	GB/T65-2000	Screw, Cheese head, Slotted M4x8	1	
5	SC341-00-10	Slide plate lock unit	1	
6		Tilt unit assembly	1	
7	SC324A-00-06	Pan bar unit	1	
8		Pan unit assembly	1	
9	SC324-00-00-04	Bowl clamp shaft	1	
10	SC324A-00-09-01	Bowl clamp knob	1	

---



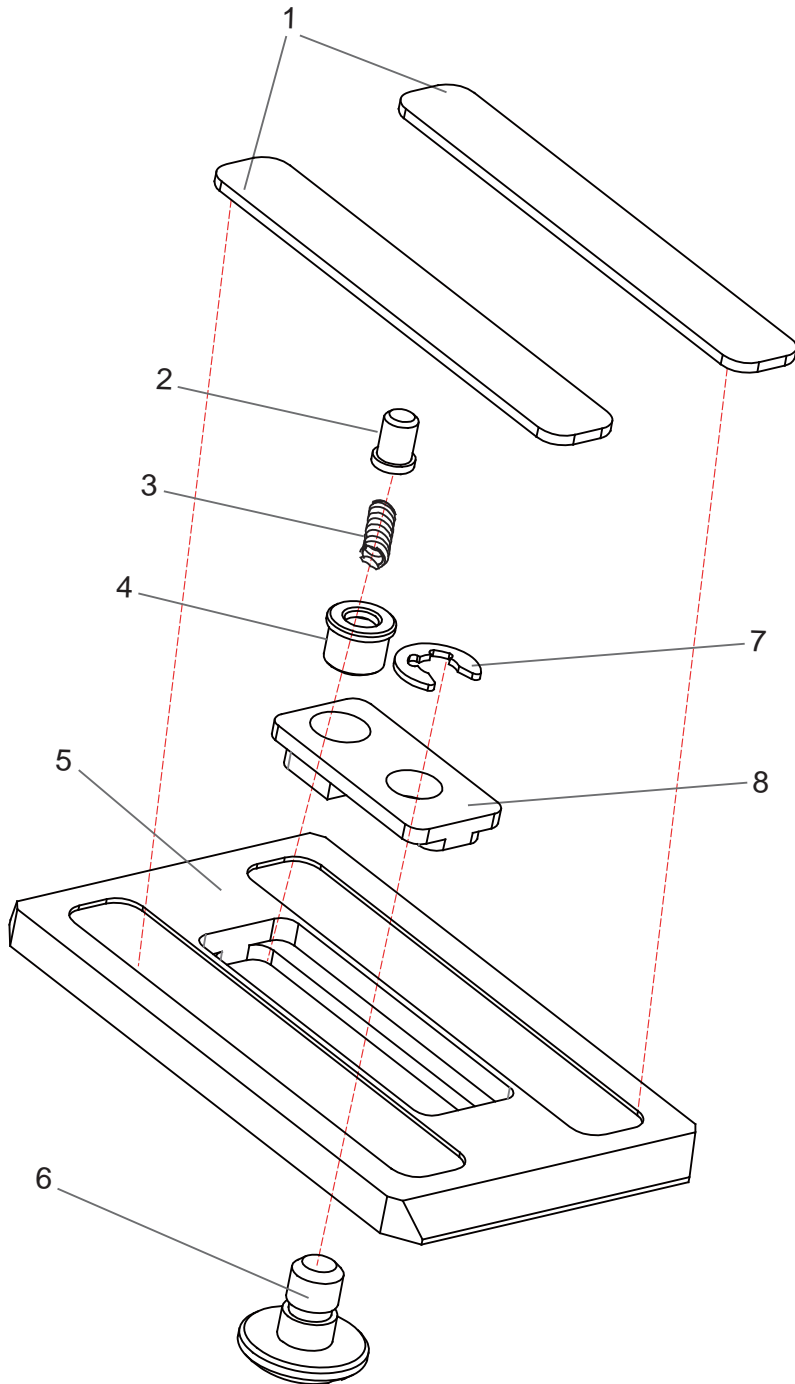
**Fig 2 Reach 1 Fluid Head - Pan Bar Unit Assembly**

---

## Fig 2 Reach 1 Fluid Head - Pan Bar Unit Assembly

Item No.	Part No.	Nomenclature	Qty	Price (\$)
1	SC324-00-06-01	Pan bar clamping sleeve	1	
2	GBT97P8	Washer, plain, 8	1	
3	SC324-00-06-06	Pan bar clamping shaft	1	
4	SC324-00-06-10	Pan bar clamping lever	1	
5	GBT70NYM4x8	Screw, cheese head, hexagon socket, M4x8	1	
6	SC323-00-07-01	Pan bar	1	
7	SC324-00-06-05	Pan bar sleeve	1	
8	SC324-00-06-08	Pan bar grip	1	
9	GBT894Z8	Circlip, standard	1	
10	SC324-00-06-07	Pan bar clamping wahser	1	

---

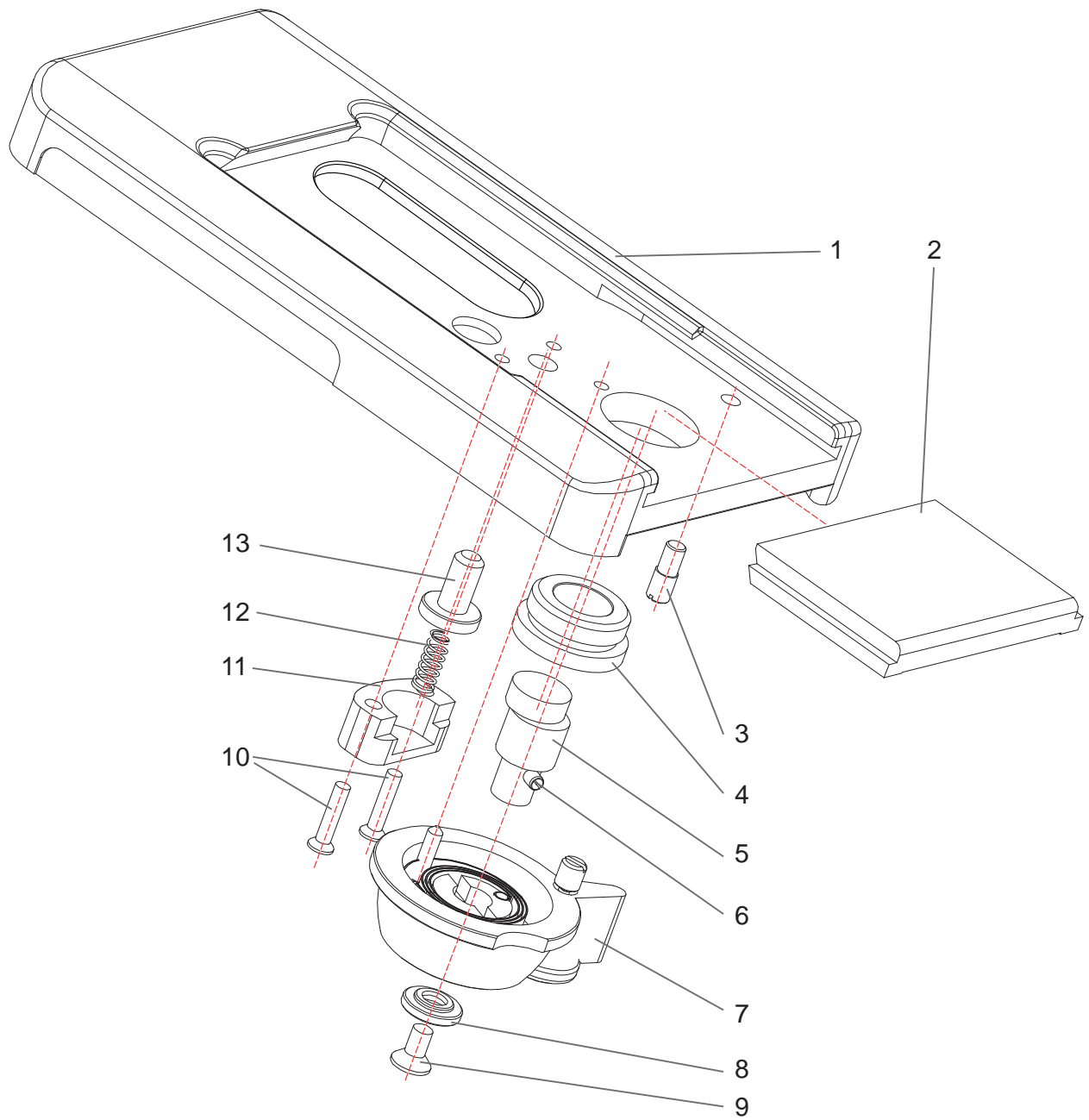


**Fig 3 Reach 1 Fluid Head - Wedge Plate Unit Assembly**

---

### Fig 3 Reach 1 Fluid Head - Wedge Plate Unit Assembly

Item No.	Part No.	Nomenclature	Qty	Price (\$)
1	SC343-00-12-04	Non-slip plate, leather	2	
2	SC343-00-12-06	DV location pin	1	
3	SC343-00-12-07	Pin spring	1	
4	SC343-00-12-05	Pin sleeve	1	
5	SC343-00-12-01	Wedge plate	1	
6	SC343-00-12-03	1/4" screw	1	
7	GBT894Z8	Circlip, standard	1	
8	SC343-00-12-02	Sliding Cube	1	



**Fig 4 Reach 1 Fluid Head - Sliding Plate Unit Assembly**

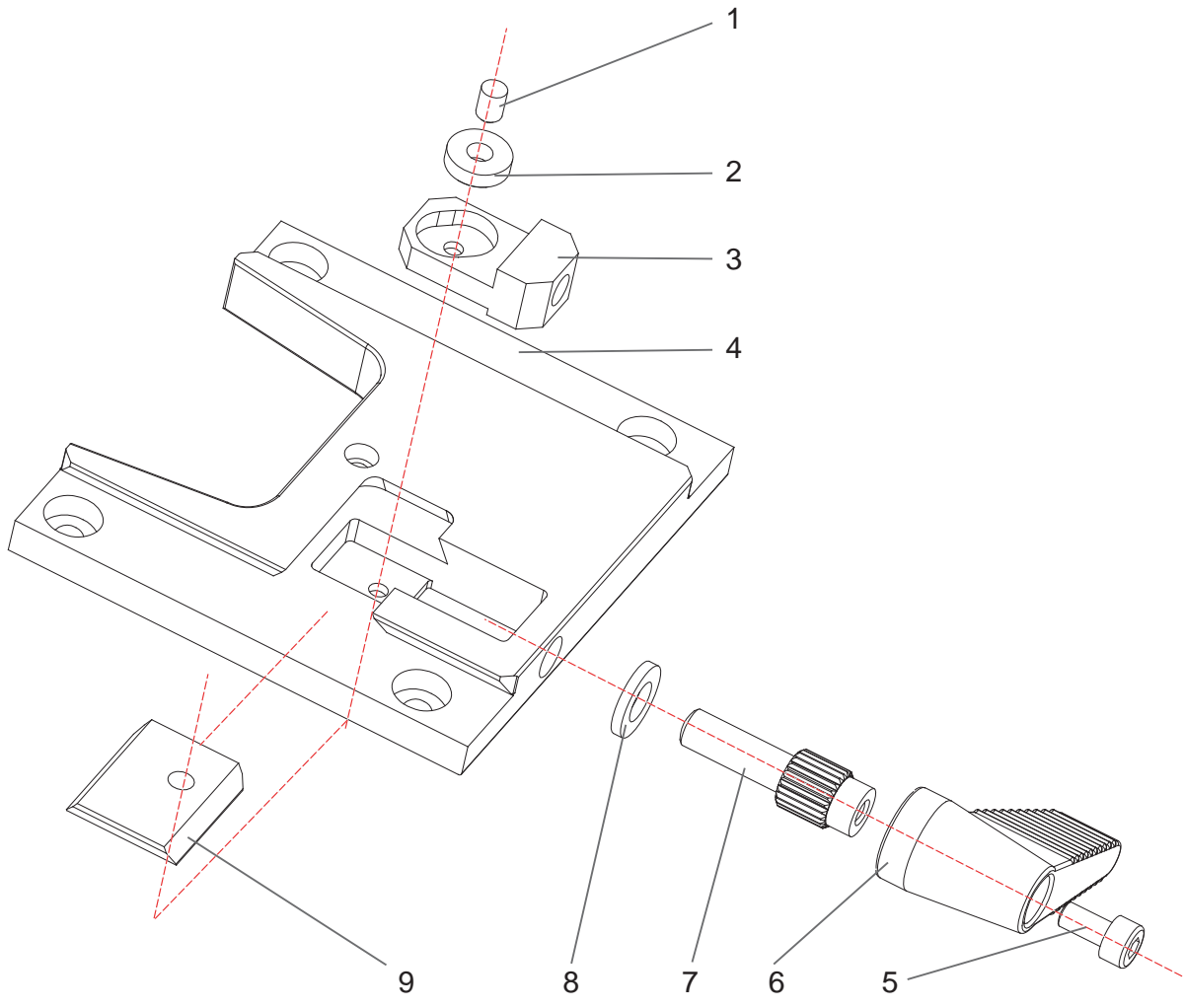


---

## Fig 4 Reach 1 Fluid Head - Sliding Plate Unit Assembly

Item No.	Part No.	Nomenclature	Qty	Price (\$)
1	SC341-00-05-01	Slide plate	1	
2	SC343-00-05-02	Wedge plate block	1	
3	P-TS-4x12	Pin, thread, slotted 4X12	1	
4	SC343-00-05-03	Axle sleeve	1	
5	SC343-00-06-06	Eccentric axle	1	
6	P-SS-3x14	Pin, spring-type, slotted, 3X14	1	
7	SC343-00-11	Quick release knob Assembly	1	
8	SC343-00-06-08	Washer	1	
9	S-PCO-4x8	Screw, csk head, pozidriv, 4x8	1	
10	S-PCO-3x14	Screw, csk head, pozidriv, 3x14	1	
11	SC343-00-05-05	Pressing pad	1	
12	SC343-00-05-07	Spring for control pillar	1	
13	SC343-00-05-06	Wedge plate control pillar	1	

---



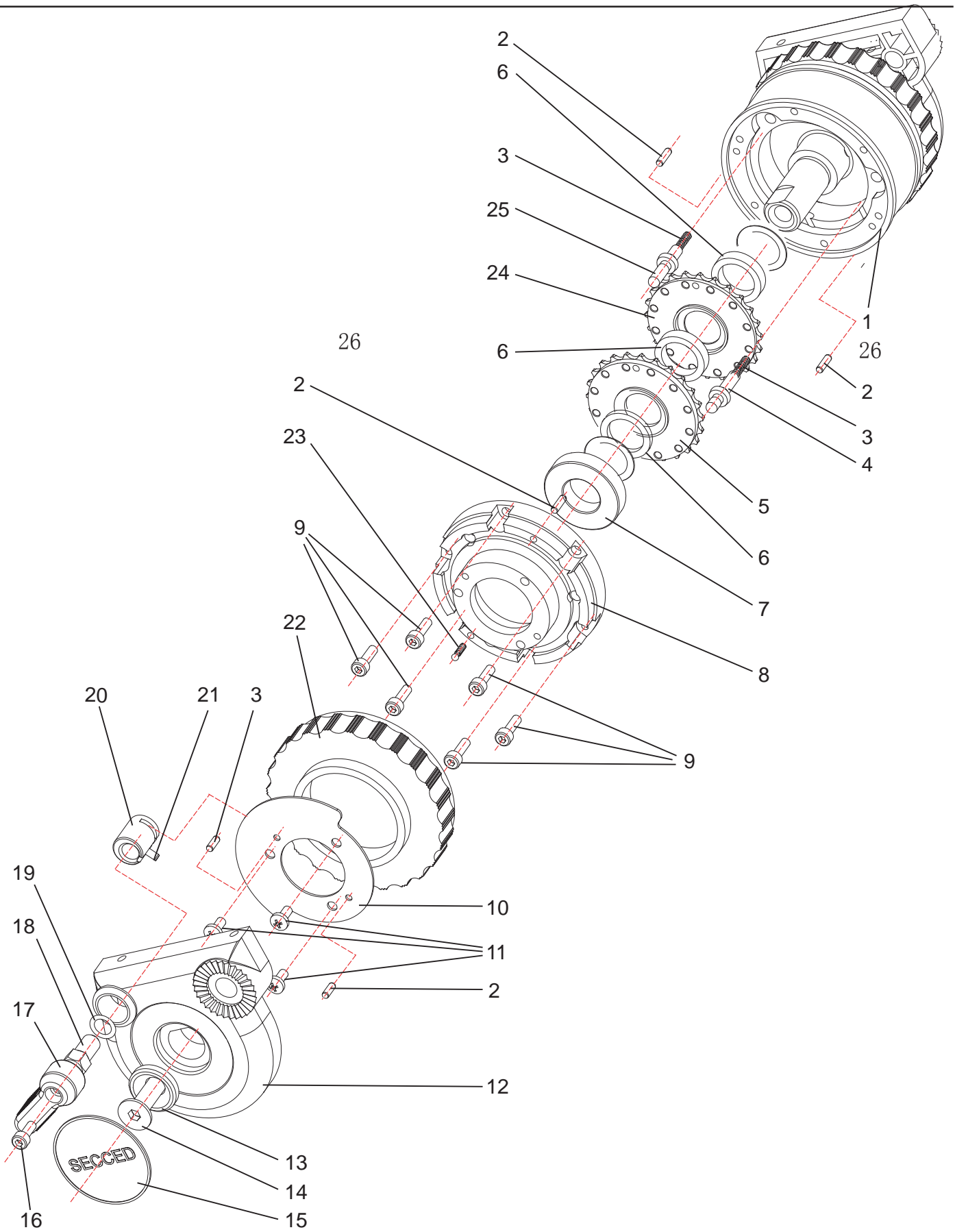
**Fig 5 Reach 1 Fluid Head - Slide Plate Lock Assembly**

---

## Fig 5 Reach 1 Fluid Head - Slide Plate Lock Assembly

Item No.	Part No.	Nomenclature	Qty	Price (\$)
1	SC343-00-10-04	Pin	1	
2	SC343-00-10-05	Shaft sleeve	1	
3	SC343-00-10-03	Sliding clamp pad	1	
4	SC341-00-10-01	Dovetail-formed plate	1	
5	S-HCH-4x8	Screw, cheese head, hex socket, M4x8	1	
6	SC343-00-10-07	Slide plate clamp	1	
7	SC343-00-10-06	Slide plate clamp shaft	1	
8	W-P-6	Washer, plain, 6	1	
9	SC343-00-10-02	Slide plate clamp pad	1	

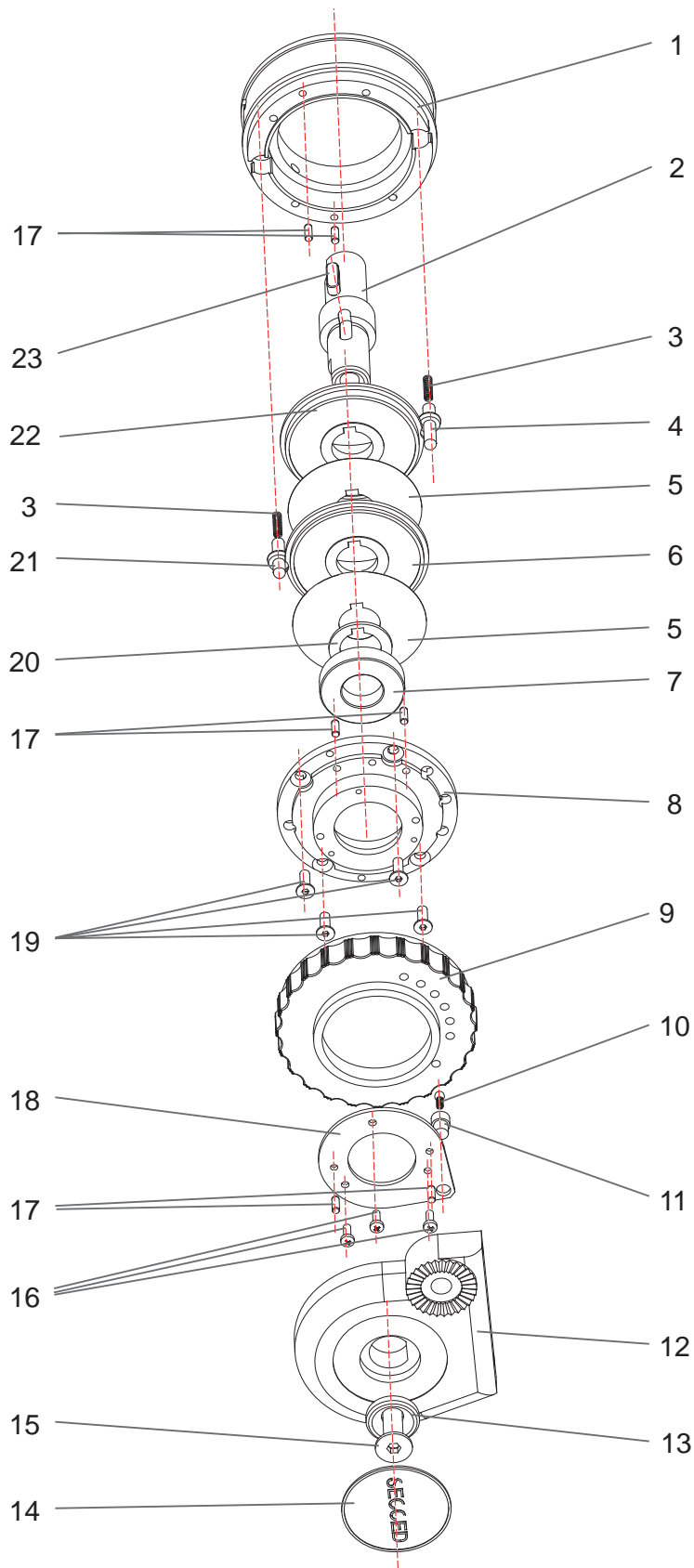
---



**Fig 6 Reach 1 Fluid Head - Tilt Brake and Drag Unit Assembly**

## Fig 6 Reach 1 Fluid Head - Tilt Brake and Drag Unit Assembly

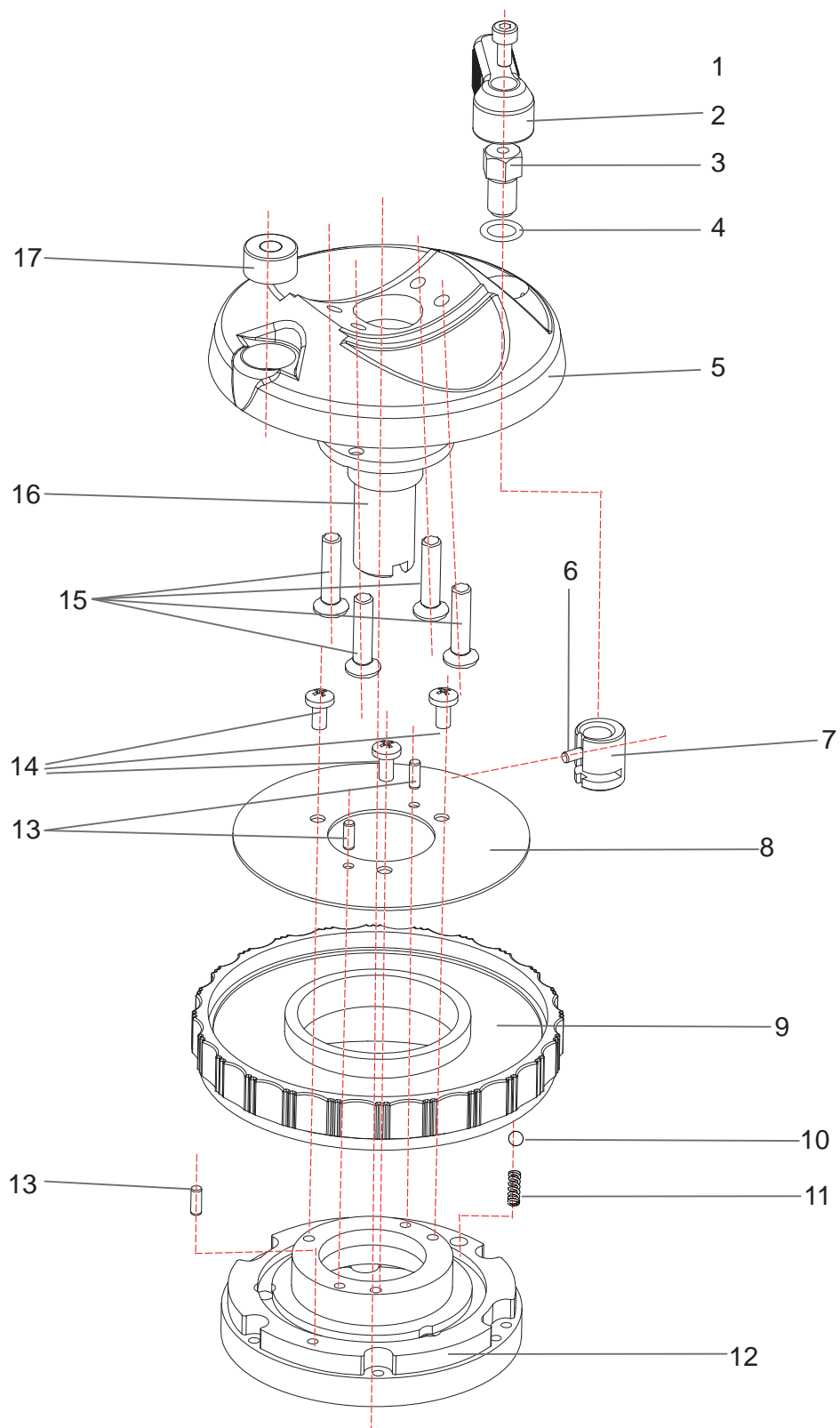
Item No.	Part No.	Nomenclature	Qty	Price (\$)
1	SC341-00-01-01	Balance mechanism assembly	1	
2	PPD-3x8	Pin, dowel, parallel, uhd steel, A3x8	5	
3	SC324-00-03-09	Spring, for locating pillar	2	
4	SC343-00-03-03	Locating pillar (short)	1	
5	SC324-00-08	Drag disk (thick)	1	
6	SC324-00-03-06 /07	Washer, plain (thin/thick)	3	
7	GBT276S16003	Bearing, deep groove ball, 16003-2Z	1	
8	SC343-00-03-01	Tilt drag housing	1	
9	GBT70NYM4x12	Screw, cheese head, hex socket, M4x12	6	
10	SC324-00-03-04	Tilt brake disk	1	
11	GBT823XPM4x8	Screw, pan head, pozidriv, M4x8	3	
12	SC324-00-03-08	L.H. side plate	1	
13	SC324-00-02-15	Adjusting washer	1	
14	GBT70NCM8x25	Screw, csk head, hex socket, M8x25	1	
15	SC341-00-00-01	Label (L.H. side plate)	1	
16	GBT70NYM4x8	Screw, cheese head, hex socket, M4x8	1	
17	SC324-00-00-01	Brake knob	1	
18	SC324-00-03-13	Tilt brake shaft	1	
19	GB/T3452J8x1.8	Rubber ring, O-sealing, 8x1.8	1	
20	SC324-00-03-05	Screwed socket (tilt brake)	1	
21	PPD-3x6	Pin, dowel, parallel, uhd steel, A3x6	1	
22	SC343-00-03-02	L.H. tilt drag knob	1	
23	SB-3 &	Steel ball, $\phi 3$ &	1	
	SC324-00-03-10	Spring for steel ball, I	1	
24	SC324-00-07	Drag disk (thin)	2	
25	SC343-00-03-04	Locating pillar (medium)	1	
26	SC324-00-03-14	Adjusting washer I	2	



**Fig 7 Reach 1 Fluid Head - Balance Mechanism Assembly**

## Fig 7 Reach 1 Fluid Head - Balance Mechanism Assembly

Item No.	Part No.	Nomenclature	Qty	Price (\$)
1	SC322-00-01-01	Main body	1	
2	SC322-00-02-01	Tilt unit shaft	1	
3	SC324-00-03-09	Spring, for locating pillar	2	
4	SC343-00-02-10	Counterbalance locating pillar II	1	
5	SC324-00-02-16	Friction bedding	2	
6	SC343-00-02-15	Counterbalance rubber disk (thin)	1	
7	GBT276S16003	Bearing, deep groove ball, 16003-2Z	1	
8	SC324-00-02-01	Counterbalance housing	1	
9	SC324-00-02-02	Counterbalance knob	1	
10	SB-3 &	Steel ball, $\phi 3$ &	1	
	SC324-00-03-10	Spring for steel ball, I	1	
11	SC324-00-02-12	Steel ball housing	1	
12	SC324-00-02-13	R.H. side plate	1	
13	SC324-00-02-15	Steel compression ring	1	
14	SC341-00-00-01	Label (side plate)	1	
15	GBT70NCM8x25	Screw, csk head, hex socket, M8x25	1	
16	GBT823XPM3x8	Screw, pan head, pozidriv, M3x8	3	
17	PPD-3x8	Pin, dowel, parallel, uhd steel, A3x8	6	
18	SC324-00-02-11	R.H. pressing disk	1	
19	GBT70NCM4x12	Screw, csk head, hex socket, M4X12	4	
20	SC324-00-02-14	Locating washer	1	
21	SC343-00-02-09	Counterbalance locating pillar I	1	
22	SC343-00-15	Counterbalance rubber disk (medium)	1	
23	GBT1096Y5x16	Plain key, parallel, 5X16	1	



**Fig 8 Reach 1 Fluid Head - Pan Unit Assembly - Pan Brake**

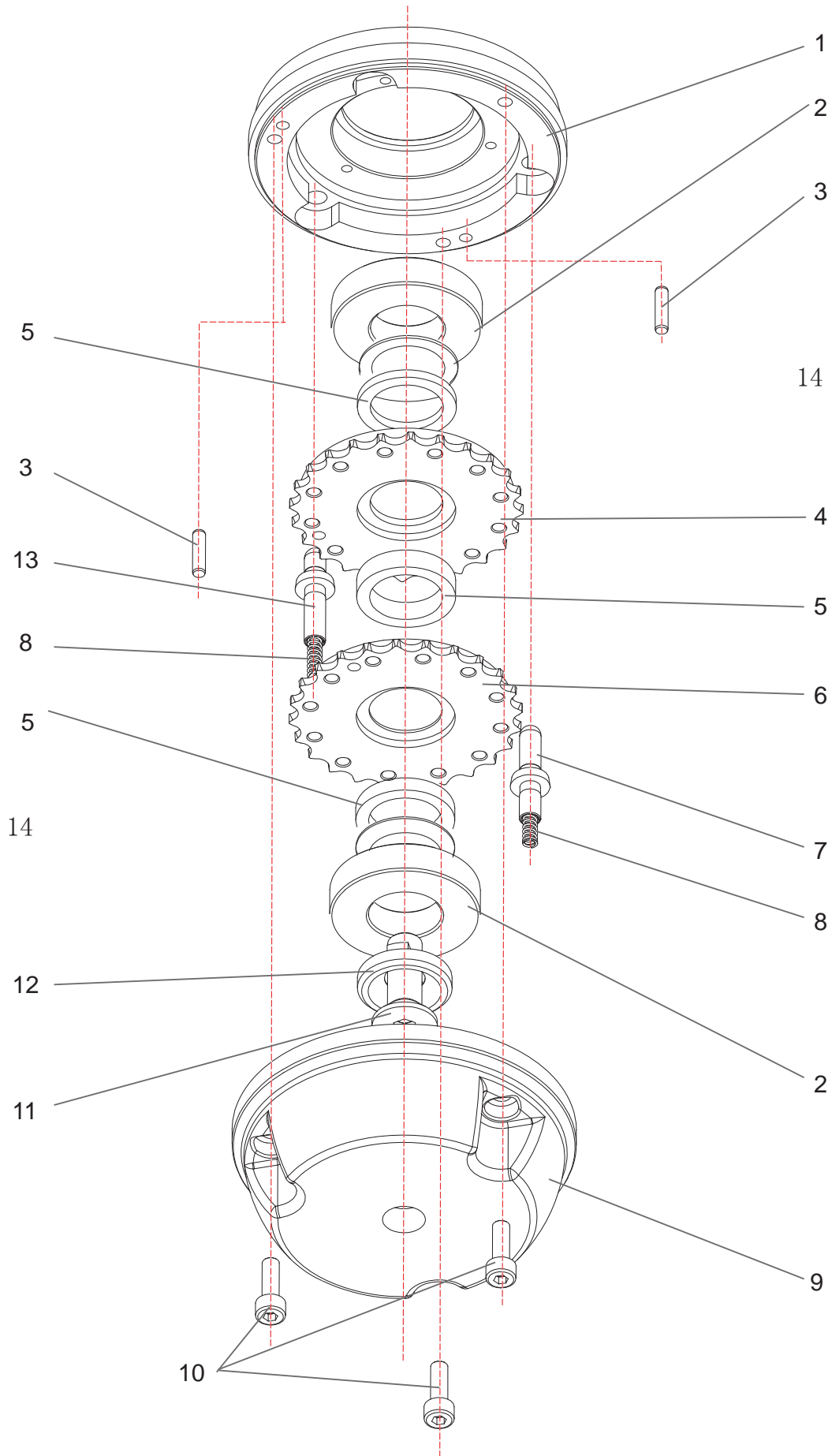


---

## Fig 8 Reach 1 Fluid Head - Pan Unit Assembly - Pan Brake

Item No.	Part No.	Nomenclature	Qty	Price (\$)
1	S-HCH-4x8	Screw, chs head, hex socket, M4x8	1	
2	SC324-00-00-01	Brake knob	1	
3	SC343-00-01-05	Pan brake shaft	1	
4	RR-8x1.8	Rubber ring, O-sealing, 8x1.8	1	
5	SC343-00-01-02	Main body base	1	
6	P-PD-2x6	Pin, dowel, parallel, uhd steel, A2x6	1	
7	SC343-00-01-04	Screwed socket (pan brake)	1	
8	SC324-00-04-04	Pan brake disk	1	
9	SC343-00-04-02	Pan drag knob	1	
10	SB-5 &	Steel ball, $\phi 5$ &	1	
11	SC324-00-04-07	Spring for steel ball, II	1	
12	SC343-00-04-01	Pan drag housing	1	
13	P-PD-3x8	Pin, dowel, parallel, uhd steel, A3x8	3	
14	S-PP-4x8	Screw, pan head, pozi, M4x8	3	
15	GB/T70.3-2000	Screw, csk head, hex socket, M5x25	3	
16	SC343-00-01-03	Pan unit shaft	1	
17	LB-15x9	Level bubble, $\phi 15 \times 9$	1	

---



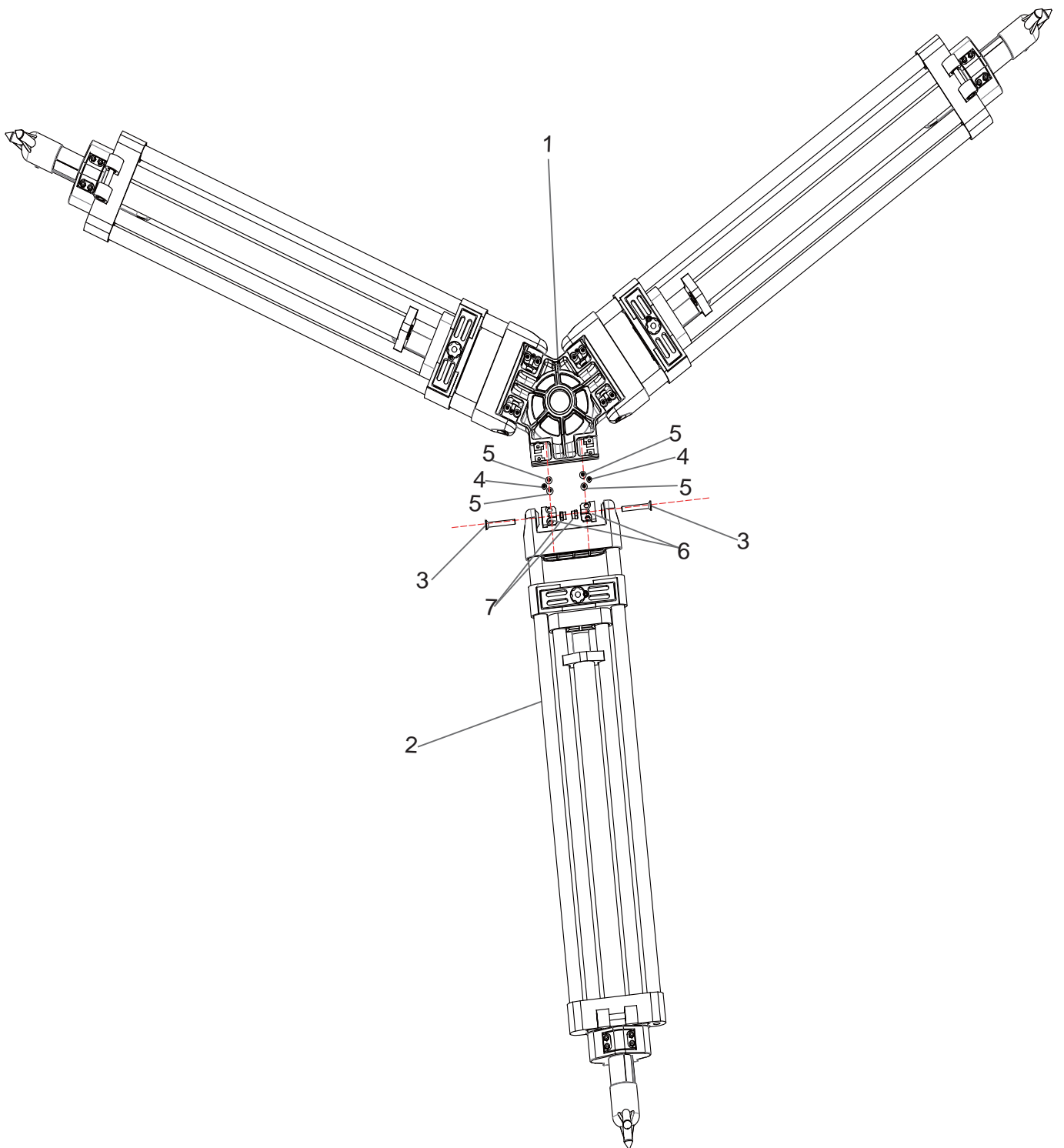
**Fig 9 Reach 1 Fluid Head - Pan Unit Assembly - Pan Drag**

---

## Fig 9 Reach 1 Fluid Head - Pan Unit Assembly - Pan Drag

Item No.	Part No.	Nomenclature	Qty	Price (\$)
1	SC343-00-04-01	Pan drag housing	1	
2	GBT276S16003	Bearing, deep groove ball, 16003-2Z	2	
3	PPD-3x8	Pin, dowel, parallel, uhd steel, A3x8	2	
4	SC324-00-08	Drag disk (thick)	1	
5	SC324-00-03-06	Washer, plain	UD	
6	SC324-00-07	Drag disk (thin)	1	
7	SC343-00-03-04	Locating pillar (medium)	1	
8	SC324-00-03-09	Spring for locating pillar	2	
9	SC343-00-04-04	Bowl base	1	
10	GBT70NYM4x8	Screw, chs head, hex socket, M4x8	3	
11	GBT70NCM8x25	Screw, chs head, hex socket, M8x25	1	
12	SC324-00-04-08	Steel blocking ring	1	
13	SC324-00-03-11	Locating pillar (short)	1	
14	SC324-00-03-14	Adjusting washer I	2	

---



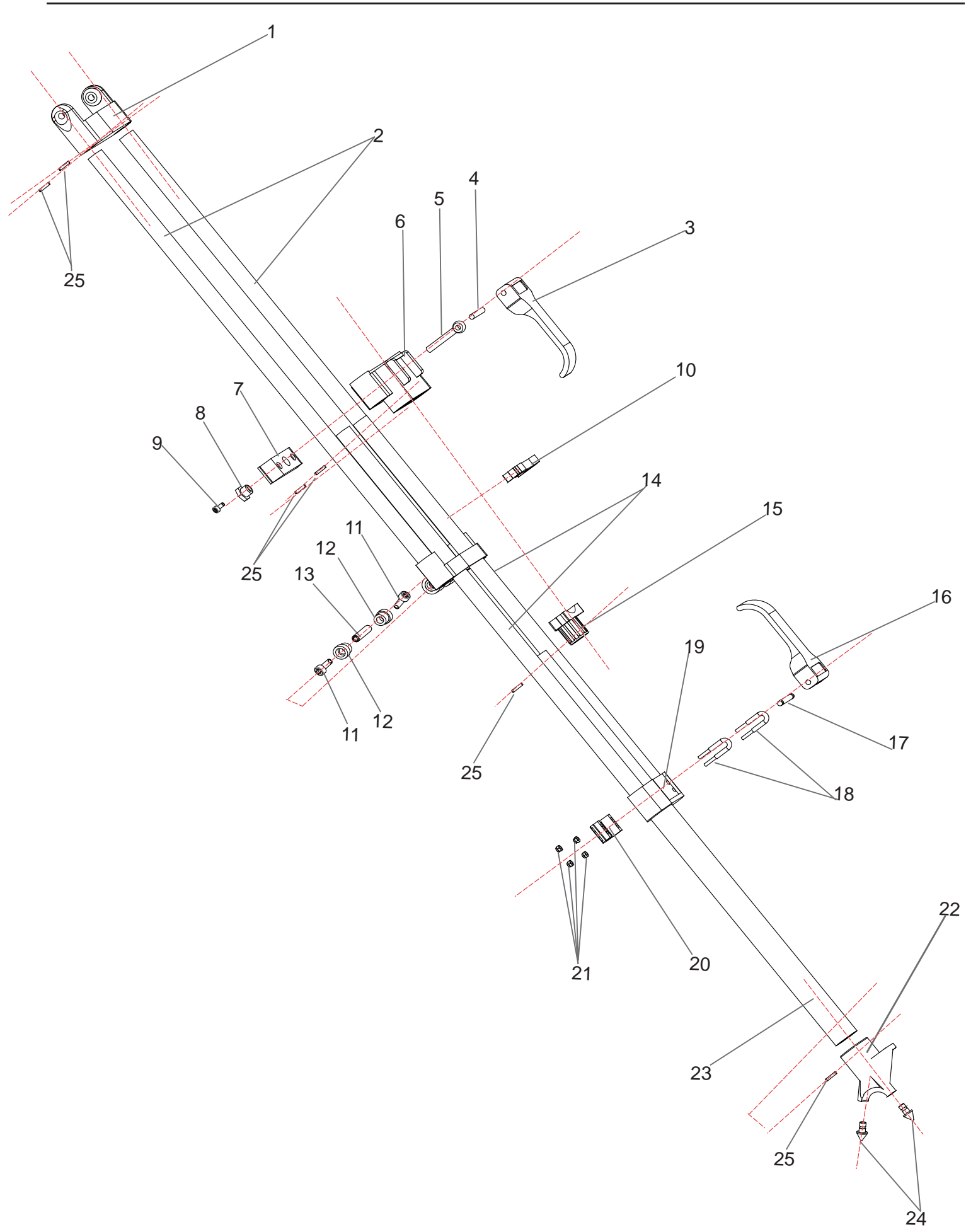
**Fig 10 318G Tripod Leg Assembly**

---

## Fig 10 318G Tripod Leg Assembly

Item No.	Part No.	Nomenclature	Qty	Price (\$)
1	SC318-00-00-01	Tripod Bowl	1	
2	SC317-00-02	Single leg section	3	
3	GBT70NCM5*30	Screw, csk head, hex socket, M5x30	6	
4	GBT823XPM3*8	Screw, pan head, pozidriv, M3x8	6	
5	GBT823XPM4*8	Screw, pan head, pozidriv, M4x8	12	
6	SC318-00-01-02	Tripod bowl joint	6	
7	GBT6172M5	Nylon tightening screw, M5	6	

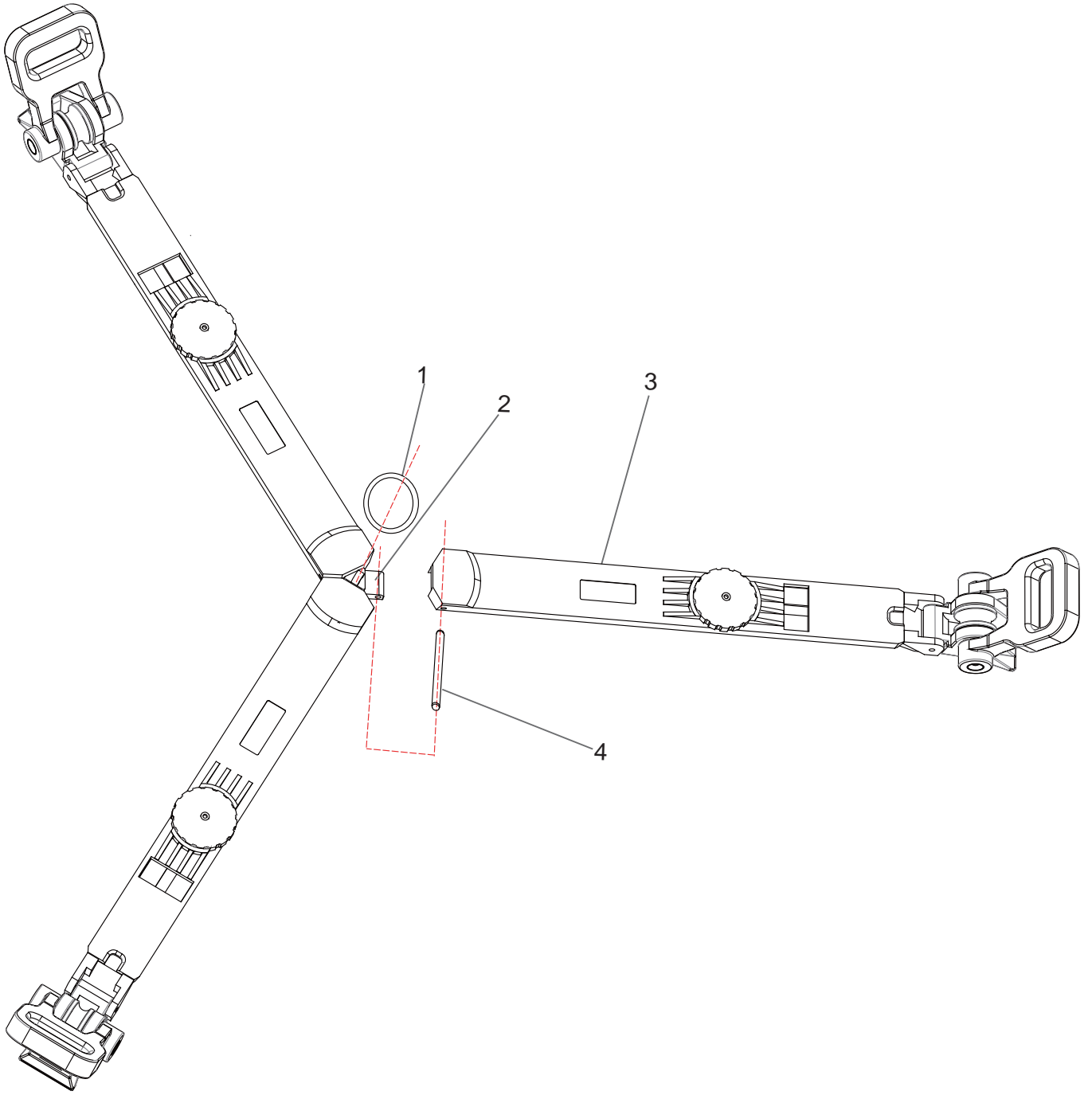
---



**Fig 11 318G Single Leg Section Assembly**

## Fig 11 318G Single Leg Section Assembly

Item No.	Part No.	Nomenclature	Qty	Price (\$)
1	SC318-00-01-01	Leg top bracket	1	
2	SC318G-00-01-50	Leg tube I	2	
3	SC318E-00-01-40	Upper clamping lever	1	
4	PPDB5x35	Pin, dowel, parallel, B5x35	1	
5	GBT798M6*35	Articulated screwed pin M6x3	1	
6	SC318-00-01-08	Upper lock sleeve	1	
7	SC318E-00-01-44	Upper lock plate	1	
8	SC318-00-01-06	Tightening screw	1	
9	GB/T70.1-2000	Screw, cheese head, hex socket, M3x6	1	
10	SC318-00-01-30	Leg clip	1	
11	GB/T70.1-2000	Screw, cheese head, hex socket, M4x8	1	
12	SC318-00-01-28	Mid spreader fixing sleeve	2	
13	SC318E-00-01-42	Mid spreader fixing shaft	1	
14	SC318G-00-01-51	Leg tube II	2	
15	SC318-00-01-07	Guide block	1	
16	SC318E-00-01-41	Lower clamping lever	1	
17	PPDB5x35	Pin, dowel, parallel, B5x35	1	
18		U-shaped screwed pin	2	
19	SC318-00-01-09	Lower locking sleeve	2	
20	SC318E-00-01-45	Lower locking plate	1	
21	GBT6172NM	Nylon tightening screw, M3	4	
22	SC317-00-01-12	Feet sleeve	1	
23	SC318G-00-01-52	Leg tube III	1	
24	SC317-00-01-13	Feet pin	2	
25	GB/T119.2-2000	Pin, dowel, parallel, 2x10	9	



**Fig 12 Floor Spreader**

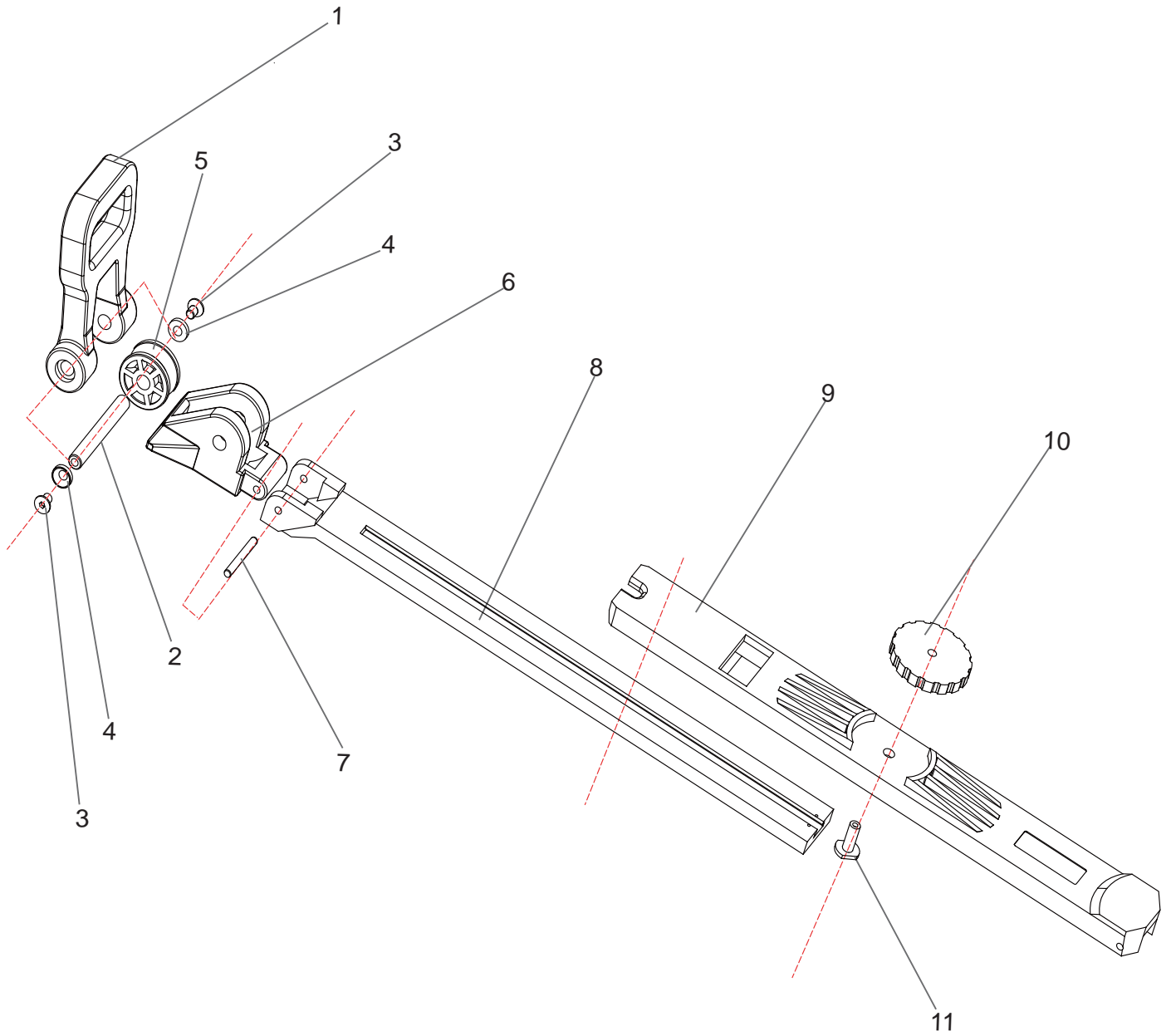


---

## Fig 12 Floor Spreader

Item No.	Part No.	Nomenclature	Qty	Price (\$)
1	YSH	Ring	1	
2	SC318-02-00-01	Connecting core	1	
3	SC317-00-01	Floor spreader single leg assembly	3	
4	PPDB4x40	Pin, dowel, parallel, B4x40	3	

---



**Fig 13 Floor Spreader Single Leg Assembly**

---

### Fig 13 Floor Spreader Single Leg Assembly

Item No.	Part No.	Nomenclature	Qty	Price (\$)
1	SC317-01-00-05	Retaining strap	3	
2	SC317-01-00-04	Shaft	3	
3	GBT 70NCM5*10	Screw, csk head, hex socket, M4x10	6	
4	SC317-01-00-06	Blocking washer	6	
5	SC317-01-00-03	Wheel	3	
6	SC317-01-00-01	Foot base	3	
7	PPDB4x40	Pin, dowel, parallel, B4x40	3	
8	SC318-02-01-02A	Inner leg	3	
9	SC318-02-01-03A	Outter leg	3	
10	SC318-02-01-05A	Clamping knob	3	
11	SC318-02-01-04A	Clamping screw	3	

---